



Operation Manual

Assembly Instructions

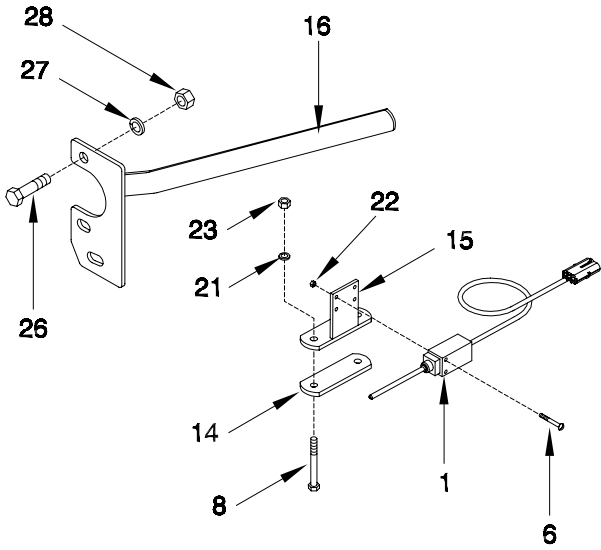


Remote Clutch Switch

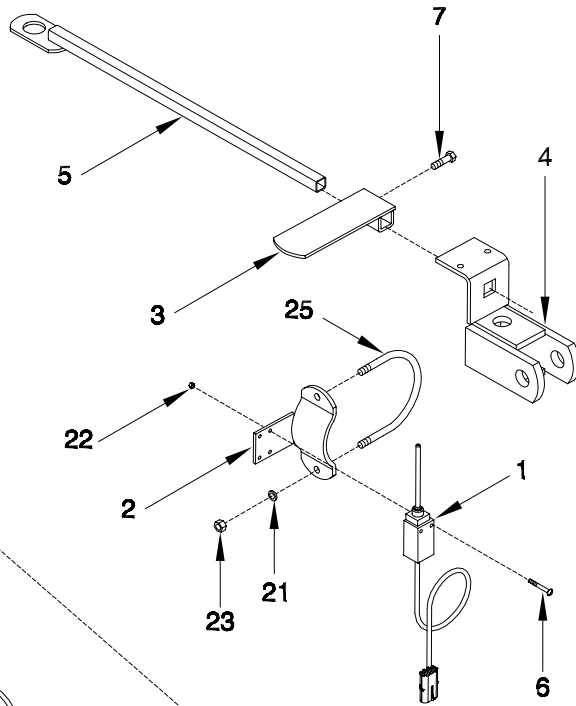
Part Number N32397-05

Metering Optional Remote Clutch Switch - Weather Pak Ends

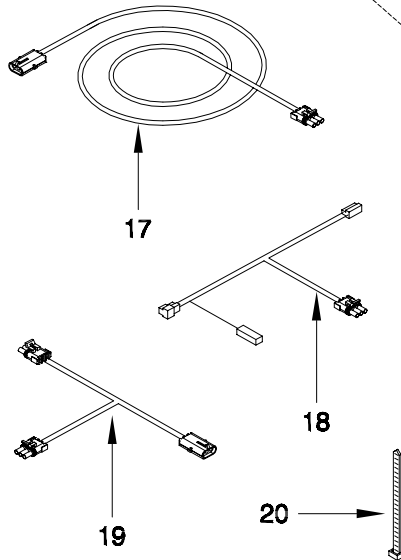
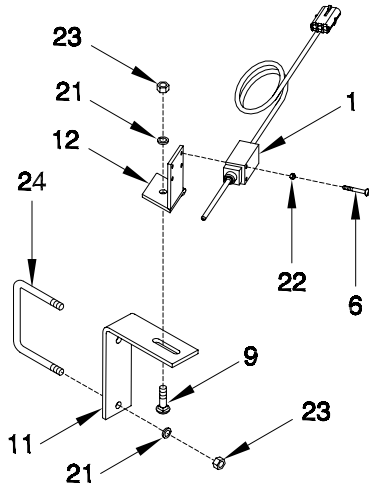
8900/9000 MAXIM AIR DRILL FRONT MOUNT



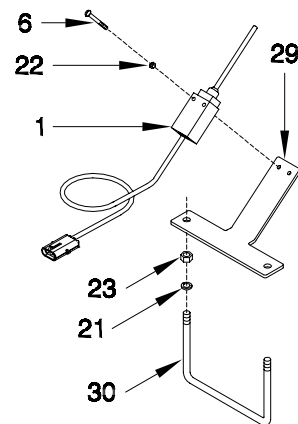
MAGNUM III



CONCEPT 2000



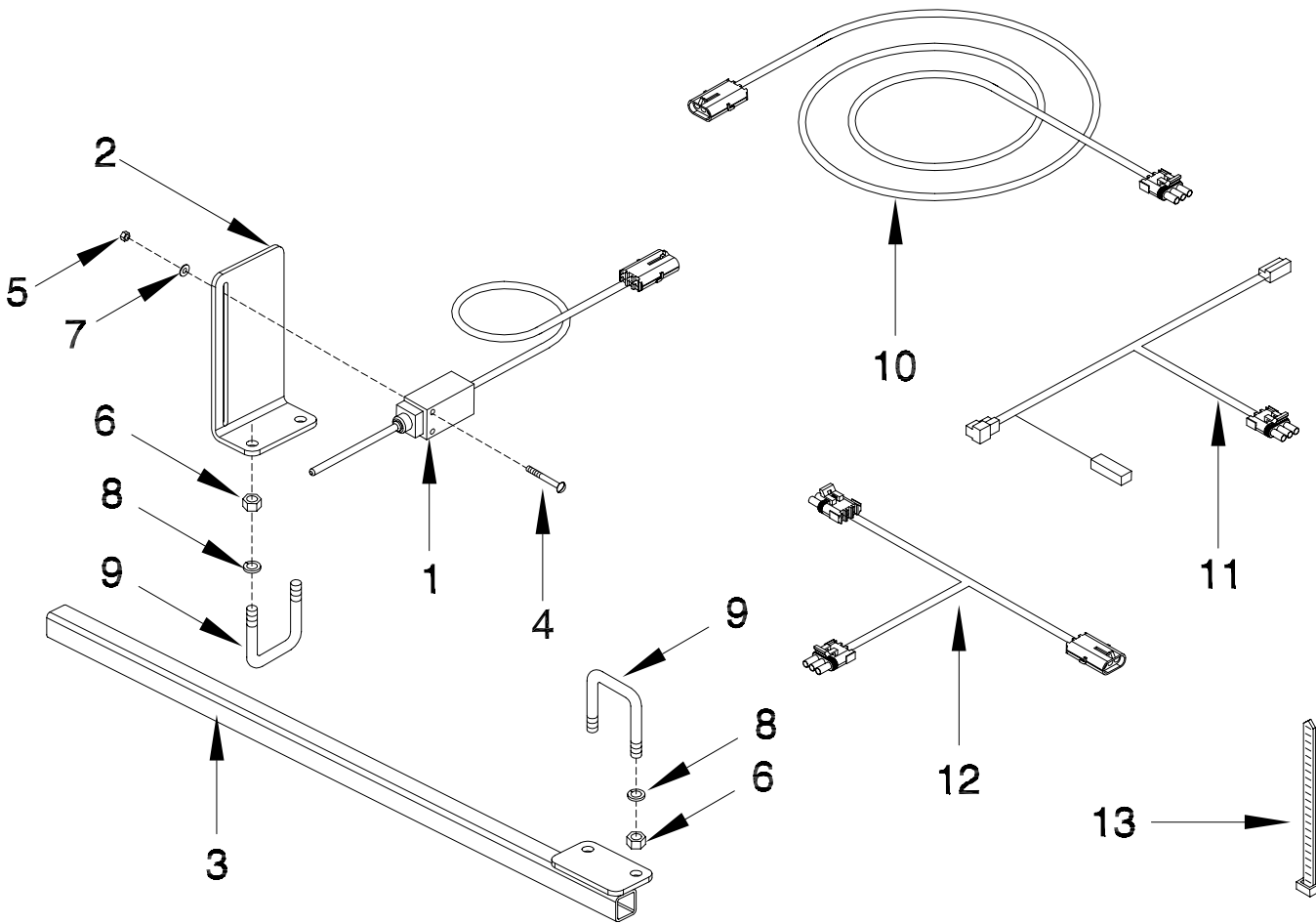
NEVER PIN



Metering - Optional Remote Clutch Switch - Weather Pak Ends

Item	Part No.	Description	Qty
MAGNUM III - Order Kits Through Wholegoods ONLY			
1	N32481	Work Switch & Wire - Weather Pak end	1
2	N32104	Switch Bracket - Magnum III	1
3	N32110	Activator Arm - Magnum III	1
4	C29572	Left Knuckle Joint - Magnum III 43' and 50' ONLY	1
5	C29579	Depth Stop Rod - Magnum III 43' and 50' ONLY	1
6	N32101	Stove Bolt - 3/16 x 1 1/2 Lg	2
7	W-867	Bolt - 3/8 x 3/4 Lg	1
17	N32457	Wire - Clutch Extension (Main) - 37 1/2' - Weather Pak ends	1
18	N32483	Connector - 'Y' Wire Tow Between ONLY - Weather Pak ends	1
19	N32482	Connector - 'Y' Wire Tow Behind ONLY - Weather Pak ends	1
20	S13336	Tie Strap	6
21	W-523	Lock Washer - 3/8	2
22	N32102	Nut - 3/16	2
23	W-514	Nut - 3/8	2
25	C31374	U-Bolt - 3/8 x 4 1/2 x 12 1/2	1
	N32781	Kit Work Switch Mag III 25', 31' & 40' - Tow Between (Includes Above Items except 4, 5 & 19)	
	N32786	Kit Work Switch Mag III 25', 31' & 40' - Tow Behind (Includes Above Items except 4, 5 & 18)	
	N32776	Kit Work Switch Mag III 43' & 50' - Tow Between (Includes Above Items except 19)	
	N32785	Kit Work Switch Mag III 43' & 50' - Tow Behind (Includes Above Items except 18)	
CONCEPT 2000 - Order Kits Through Wholegoods ONLY			
1	N32481	Work Switch & Wire - Weather Pak end	1
6	N32101	Stove Bolt - 3/16 x 1 1/2 Lg	2
9	P7C616	Carriage Bolt - 3/8 x 1 Lg	1
11	N32062	Mounting Bracket Angle	1
12	N32065	Switch Bracket - Work Switch	1
17	N32457	Wire - Clutch Extension (Main) - 37 1/2' - Weather Pak ends	1
18	N32483	Connector - 'Y' Wire Tow Between ONLY - Weather Pak ends	1
19	N32482	Connector - 'Y' Wire Tow Behind ONLY - Weather Pak ends	1
20	S13336	Tie Strap	2
21	W-523	Lock Washer - 3/8	3
22	N32102	Nut - 3/16	2
23	W-514	Nut - 3/8	3
24	N15098	U-Bolt - 3/8 x 4 x 5	1
	N32772	Kit Work Switch Concept - Tow Between (Includes Above Items except 19)	
	N32782	Kit Work Switch Concept - Tow Behind (Includes Above Items except 17 & 18)	
8900/9000 & MAXIM AIR DRILL FRONT MOUNT - Order Kits Through Wholegoods ONLY			
1	N32481	Work Switch & Wire - Weather Pak end	1
6	N32101	Stove Bolt - 3/16 x 1 1/2 Lg	2
8	C-1550	Bolt - 3/8 x 4 Lg	2
14	N32106	Mounting Plate	1
15	N32105	Switch Bracket - 8900/9000	1
16	N32107	Activator Arm - 8900/9000	1
17	N32457	Wire - Clutch Extension (Main) - 37 1/2' - Weather Pak ends	1
18	N32483	Connector - 'Y' Wire Tow Between ONLY - Weather Pak ends	1
19	N32482	Connector - 'Y' Wire Tow Behind ONLY - Weather Pak ends	1
20	S13336	Tie Strap	6
21	W-523	Lock Washer - 3/8	2
22	N32102	Nut - 3/16	2
23	W-514	Nut - 3/8	2
26	W-497	Hex Bolt - 5/8 x 1 1/2 25 - 31 and 31 - 41 ONLY	2
27	W-526	Lock Washer - 5/8 25 - 31 and 31 - 41 ONLY	2
28	W-517	Nut - 5/8 25 - 31 and 31 - 41 ONLY	2
	N32775	Kit Work Switch 8900/9000 - Tow Between (Includes Above Items except 19)	
	N32774	Kit Work Switch 8900/9000 - Tow Behind (Includes Above Items except 18)	
Never Pin - Order Kits Through Wholegoods ONLY			
1	N32481	Work Switch & Wire - Weather Pak end	1
6	N32101	Stove Bolt - 3/16 x 1 1/2 Lg	2
17	N32457	Wire - Clutch Extension (Main) - 37 1/2' - Weather Pak ends	1
18	N32483	Connector - 'Y' Wire Tow Between ONLY - Weather Pak ends	1
19	N32482	Connector - 'Y' Wire Tow Behind ONLY - Weather Pak ends	1
20	S13336	Tie Strap	6
21	W-523	Lock Washer - 3/8	2
22	N32102	Nut - 3/16	2
23	W-514	Nut - 3/8	2
29	N34731	Bracket - Work Switch - Never Pin	1
30	H10592	U-Bolt - 3/8 x 6 x 5	1
	N35620	Kit Work Switch Never Pin - Tow Between (Includes Above Items except 19)	
	N35619	Kit Work Switch Never Pin - Tow Behind (Includes Above Items except 18)	

Maxim III Remote Clutch Switch



Item	Part No.	Description	Qty
1	N32481	Work Switch & Wire - Weather Pak End	1
2	S39949	Bracket Mount - Work Switch - Maxim III	1
3	S39948	Bracket Actuator - Work Switch - Maxim III	1
4	N32101	Stove Bolt - 3/16 x 1 1/2 Lg	2
5	N32102	Nut - 3/16	2
6	W-514	Hex Bolt - 3/8	4
7	S39549	Flatwasher - 3/16	2
8	W-523	Lockwasher - 3/8	4
9	N15097	U-Bolt - 3/8 x 2 x 5	2
10	N32457	Wire - Clutch Extension (Main) - 37 1/2 ft - Weather Pak Ends	1
11	N32483	Connector - 'Y' Wire - Tow Between ONLY - Weather Pak Ends	1
12	N32482	Connector - 'Y' Wire - Tow Behind ONLY - Weather Pak Ends	1
13	S13336	Tie Strap	6
		Order Kits through Wholegoods Only	
	N41221	Kit Work Switch Maxim III - Tow Between (Includes above items except 12)	
	N41220	Kit Work Switch Maxim III - Tow Behind (Includes above items except 11)	

Maxim III Air Drill

- Mount the switch on the right hand castor axle arm on the main frame as shown. Position the switch approximately 24" (60 cm) in front of the truss tube.
- Attach the activator arm to the front truss tube of the main frame as shown, positioning it approximately 1" (25 cm) away from the switch.
- Adjust the switch position to engage clutch as openers touch ground surface.

The spring arm of the switch moves approximately 1 inch before the switch engages.

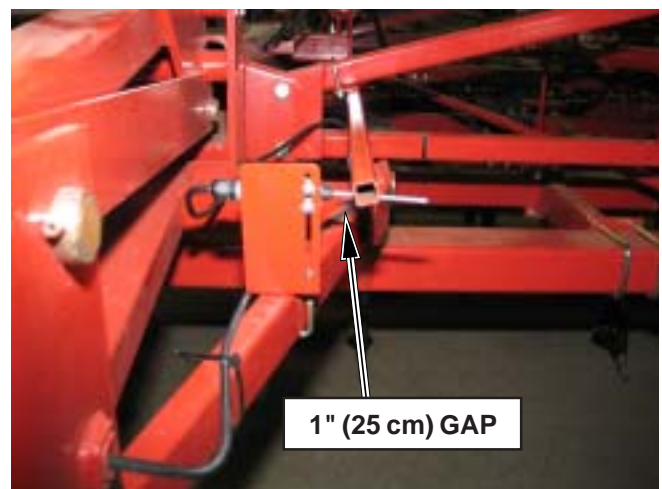
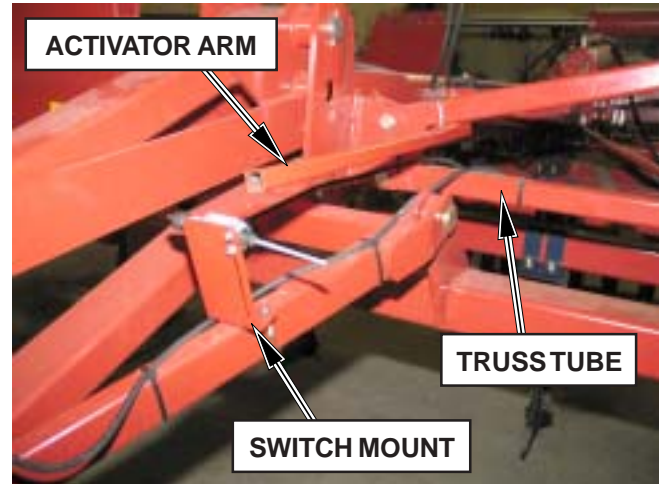
Note: Final adjustment is the responsibility of the operator.

Tow Between

- Plug N32060 'Y' adaptor into Air Cart clutch harness at the 2 pin connector located at the clutch. Attach the single wire plug to the single wire coming off the ground speed sensor.
- Attach the N16893 extension wire to 'Y' adaptor.
- Route the N16893 extension wire along the right hand hitch pole and along front wing lift truss to the castor axle.
- Connect the switch harness to extension wire.

Tow Behind

- Plug N32061 'Y' adaptor into Air Cart clutch harness at 4 pin connector located on packer frame.
- Route the N16893 extension wire across the main frame to the right hand castor axle.
- Connect the switch harness to extension wire.



Assembly

Maxim & Maxim II Air Drill

- Mount switch on mainframe gauge wheel as shown.
- Attach activator arm to right mounting bracket as shown.
- Adjust switch position to engage clutch as opener touch ground surface.

The spring arm of the switch moves approximately 1 inch before the switch engages.

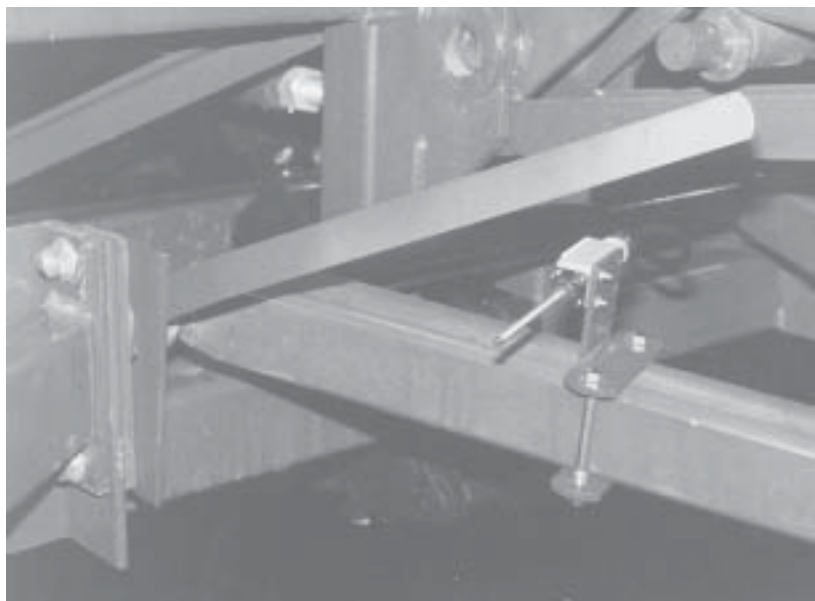
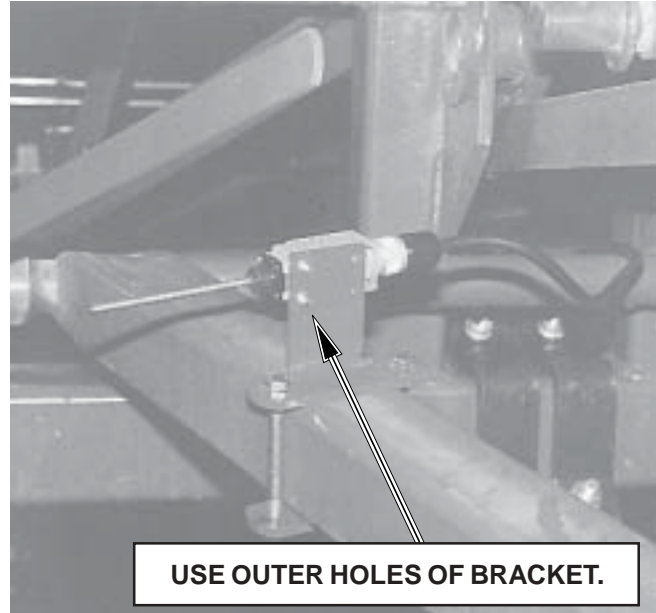
Note: Final adjustment is the responsibility of the operator.

Tow Between

- Plug N32060 'Y' adaptor into Air Cart clutch harness at the 2 pin connector located at the clutch. Attach the single wire plug to the single wire coming off the ground speed sensor.
- Attach N16893 extension wire to 'Y' adaptor.
- Route N16893 extension wire along left hand hitch pole and across main frame following the hydraulic hoses.
- Connect switch harness to extension wire.

Tow Behind

- Plug N32061 'Y' adaptor into Air Cart clutch harness at 4 pin connector located on packer frame.
- Route N16893 extension wire across main frame to gauge wheel.
- Connect switch harness to extension wire.



Never Pin

- Mount switch on mainframe below Flow Divider cylinder shafts as shown.
- Adjust switch position to engage clutch as openers touch ground surface.

The spring arm of the switch moves approximately 1 inch before the switch engages.

Note: Final adjustment is the responsibility of the operator.

Tow Between

- Plug N32060 'Y' adaptor into Air Cart clutch harness at the 2 pin connector located at the clutch. Attach the single wire plug to the single wire coming off the ground speed sensor.
- Attach N16893 extension wire to 'Y' adaptor.
- Route N16893 extension wire along left hand hitch pole and across main frame following the hydraulic hoses to the Flow Divider.
- Connect switch harness to extension wire.

Tow Behind

- Plug N32061 'Y' adaptor into Air Cart clutch harness at 4 pin connector located on packer frame.
- Route N16893 extension wire across main frame to Flow Divider.
- Connect switch harness to extension wire.



Assembly

Concept 2000

- Mount switch on mainframe to rear frame member next to left axle as shown.
- Adjust switch position to engage clutch as openers touch ground surface.
The spring arm of the switch moves approximately 1 inch before the switch engages.

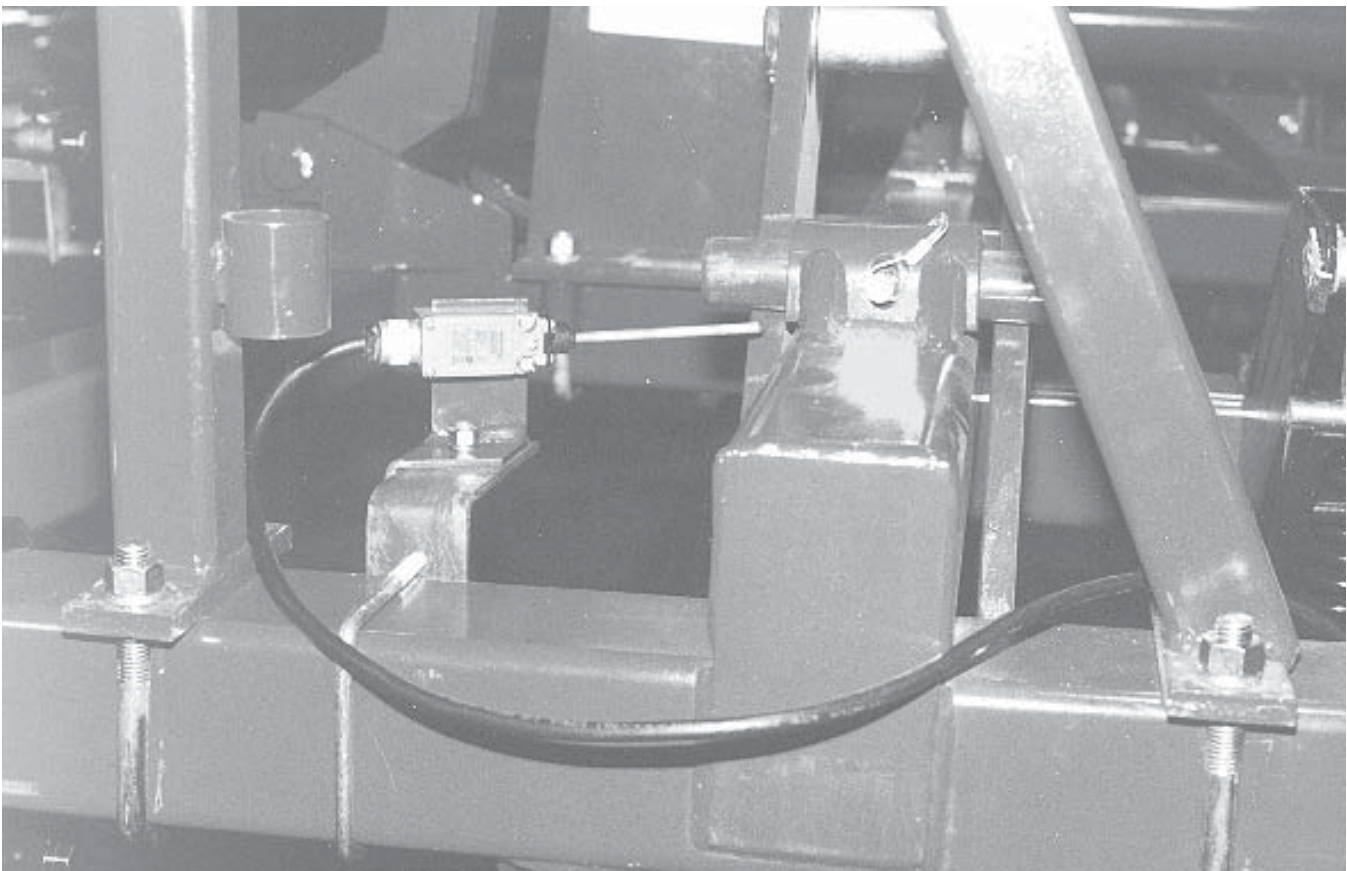
Note: Final adjustment is the responsibility of the operator.

Tow Between

- Plug N32060 'Y' adaptor into Air Cart clutch harness at the 2 pin connector located at the clutch. Attach the single wire plug to the single wire coming off the ground speed sensor.
- Attach N16893 extension wire to 'Y' adaptor.
- Route N16893 extension wire inside left hand hitch pole and across main frame following the hydraulic hoses to left axle assembly.
- Connect switch harness to extension wire.

Tow Behind

- Plug N32061 'Y' adaptor into Air Cart clutch harness at 4 pin connector located on frame.
- Connect switch harness to extension wire.



Magnum III

- Mount switch to left cylinder on mainframe as shown.
- Attach activator arm to depth stop rod as shown. On 43' and 50' models the left knuckle joint and depth stop rod must be installed.
- Adjust switch position to engage clutch as openers touch ground surface.
The spring arm of the switch moves approximately 1 inch before the switch engages.

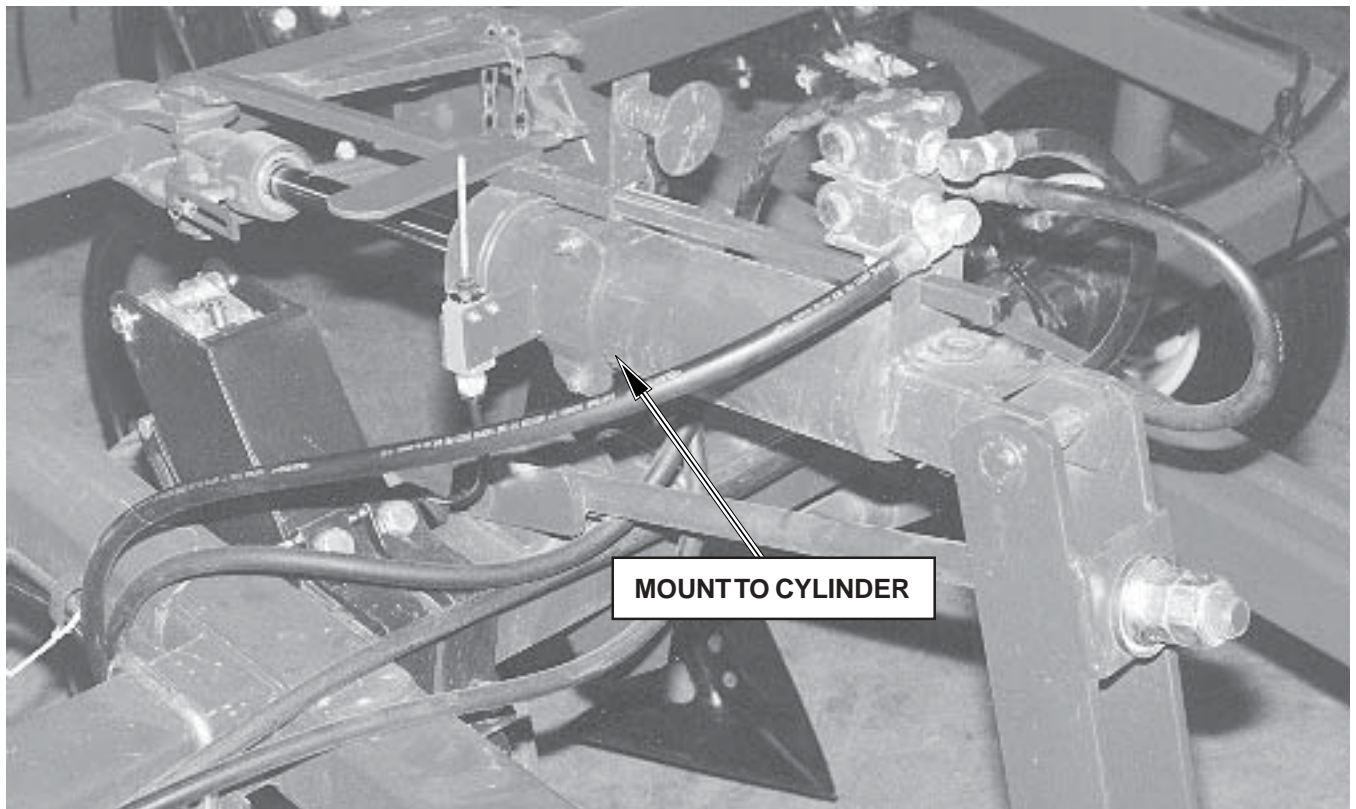
Note: Final adjustment is the responsibility of the operator.

Tow Between

- Plug N32060 'Y' adaptor into Air Cart clutch harness at the 2 pin connector located at the clutch. Attach the single wire plug to the single wire coming off the ground speed sensor.
- Attach N16893 extension wire to 'Y' adaptor.
- Route N16893 extension wire inside left hand hitch pole following the hydraulic hoses and across main frame to left axle assembly.
- Connect switch harness to extension wire.

Tow Behind

- Plug N32061 'Y' adaptor into Air Cart clutch harness at 4 pin connector located on frame.
- Route N16893 extension wire across main frame to left axle assembly.
- Connect switch harness to extension wire.



Assembly

8900/9000

- Mount switch on mainframe gauge wheel as shown.
- Attach activator arm to right mounting bracket as shown.
- Adjust switch position to engage clutch as openers touch ground surface.
The spring arm of the switch moves approximately 1 inch before the switch engages.

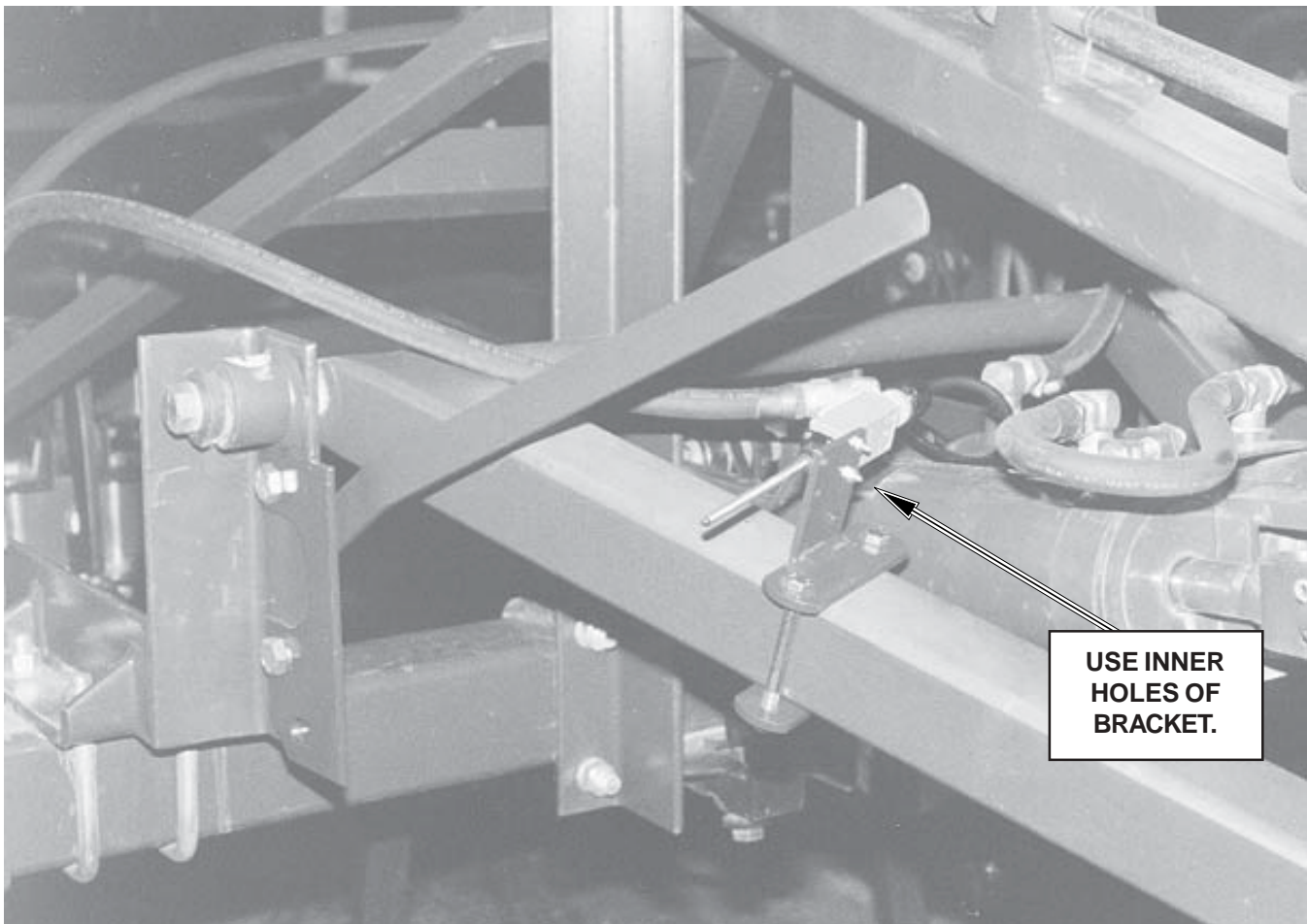
Note: Final adjustment is the responsibility of the operator.

Tow Between

- Plug N32060 'Y' adaptor into Air Cart clutch harness at the 2 pin connector located at the clutch. Attach the single wire plug to the single wire coming off the ground speed sensor.
- Attach N16893 extension wire to 'Y' adaptor.
- Route N16893 extension wire along left hand hitch pole following the hydraulic hoses and across main frame to gauge wheel.
- Connect switch harness to extension wire.

Tow Behind

- Plug N32061 'Y' adaptor into Air Cart clutch harness at 4 pin connector located on frame.
- Route N16893 extension wire across main frame to gauge wheel.
- Connect switch harness to extension wire.



Xpress

- Mount switch on mainframe as shown.
- Adjust switch position to engage clutch as openers touch ground surface.

The spring arm of the switch moves approximately 1 inch before the switch engages.

Note: Final adjustment is the responsibility of the operator.

Tow Between

- Plug N32060 'Y' adaptor into Air Cart clutch harness at the 2 pin connector located at the clutch. Attach the single wire plug to the single wire coming off the ground speed sensor.
- Attach N16893 extension wire to 'Y' adaptor.
- Route N16893 extension wire through hitch following the hydraulic hoses and across mainframe to switch location.
- Connect switch harness to extension wire.





CORPORATE OFFICE AND TRAINING CENTRE

2131 Airport Drive
Saskatoon, SK, Canada S7L 7E1
Tel: (306) 933-8585 Fax: (306) 933-8626

**MANUFACTURING AND
RESEARCH & DEVELOPMENT**

85 York Road Yorkton, SK, Canada S3N 3P2
Tel: (306) 783-8585 Fax: (306) 782-5250

MANUFACTURING

284 - 6th Ave. N.W.
Minnedosa, MB, Canada R0J 1E0
Tel: (204) 867-2713 Fax: (204) 867-2678

UNITED STATES OFFICE

4400 Burdick Expressway E.
Minot, ND, USA 58701
Tel: (701) 852-4171 Fax: (701) 838-9444

The policy of Morris Industries Ltd. is one of continuing improvement, therefore, the company reserves the right to change any specification without notice.