

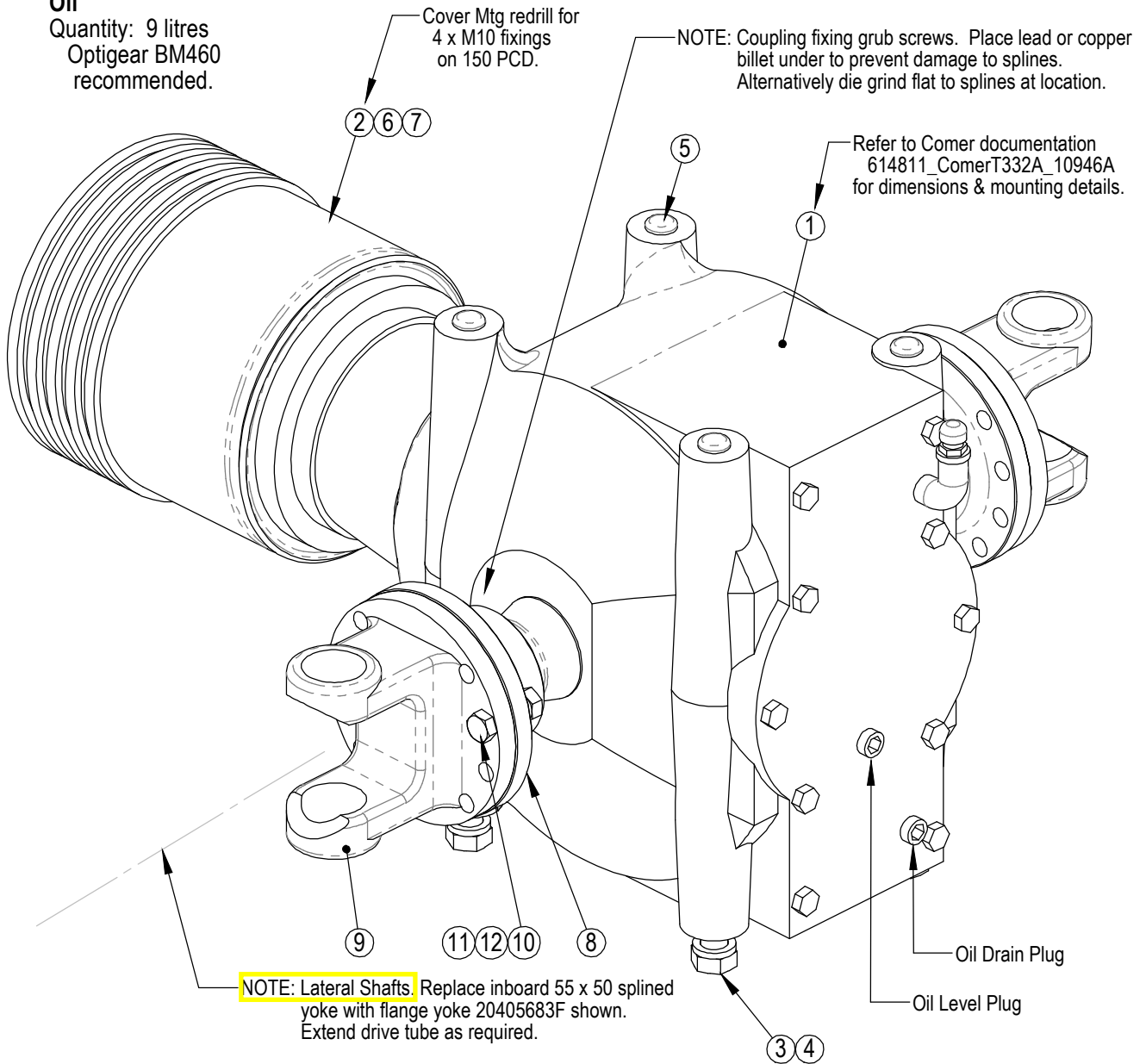


HR65, RC2000 ALTERNATIVE GEARBOX - Comer T332A (CH3000 - 300hp)

Drg No. / Issue 614805 Sheet 1 / -

Oil

Quantity: 9 litres
Optigear BM460 recommended.



ITEM NO.	QTY.	PART NO.	DESCRIPTION
1	1	614811	Gearbox T-332A
2	1	614665	Guard / Clutch Cover
3	4	301220505	Bolt M20 x 50
4	4	308200045	Spr Washer M20 -3/4"
5	4	208044360	Plug 20mm
6	4	301410255	Bolt M10 x 25
7	4	308100065	Flat Washer M10
8	2	614812	Coupling
9	2	20405683F	Flange Yoke #12
10	16	301214505	Bolt M14 x 50
11	16	308140045	Spring Washer M14
12	16	307214015	Nut M14
13	4	314212200	Grub Screw M12 x 12

GBox Ratio - 2.5 : 1

Rotor Speed

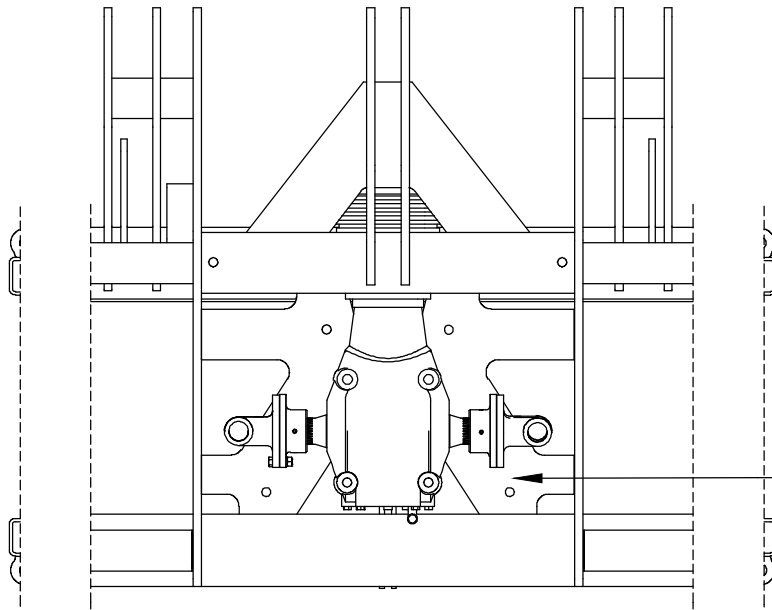
10/17 side drive sprockets: 235rpm

[Option]
11/16 side drive sprockets: 275rpm

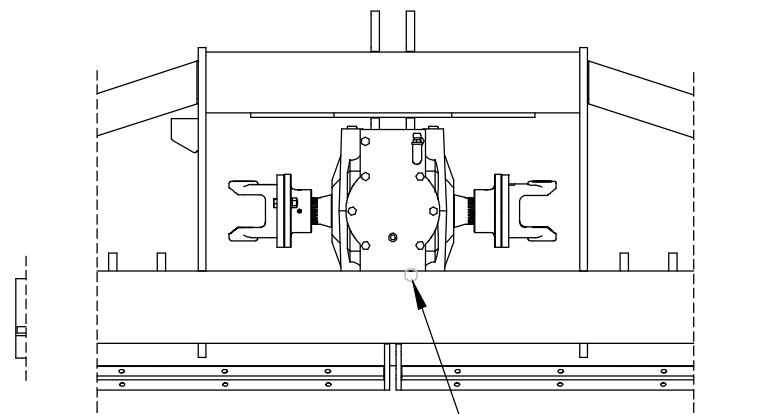


HR65, RC2000 ALTERNATIVE GEARBOX - Comer T332A (CH3000 - 300hp)

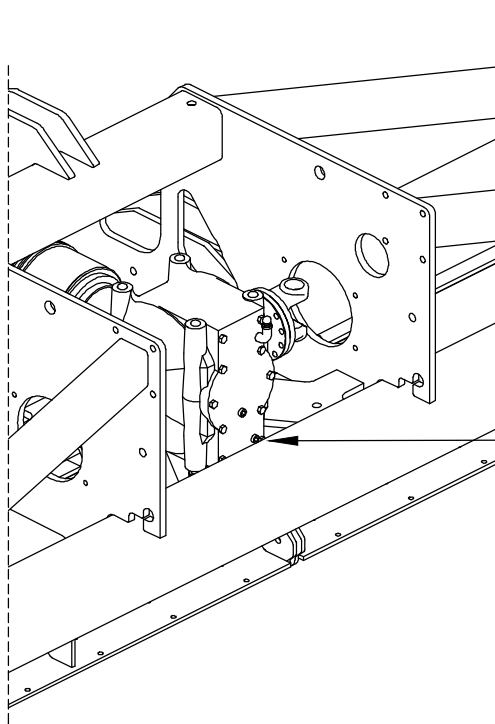
Drg No. / Issue 614805 Sheet 2 / -



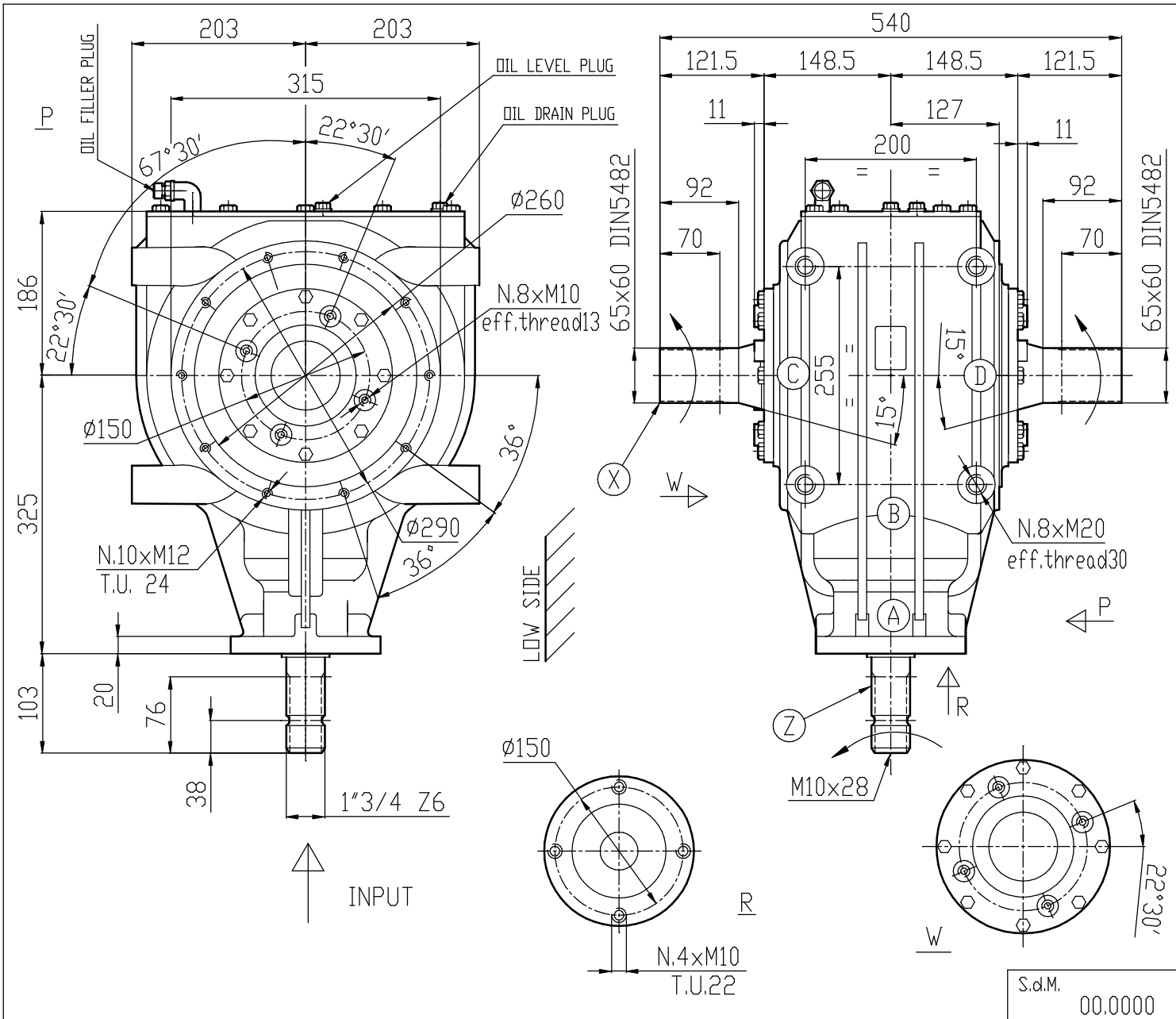
Note: Modify existing mounting plate to accommodate T332A gearbox. Recommend new Mtg Plate flush with bottom of existing. Relocate g'box forward also to allow plumbing to drain. Open holes through clevis plates to clear d'shaft as required.

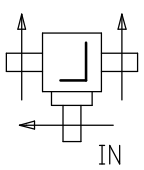


Drain Plug position



Note: Drain Plug position. Approx 20mm from gearcase to rear frame member. Before fixing gearbox plumb drain for access. [Banjo fitting or compact elbow / tee.]



REDUCTION GEAR UNIT	Ratio	Rated input	Rated input power	Rated output	Weight	Lubricant								
	i	r.p.m.	HP	torque da Nm	Kg	Oil <input checked="" type="checkbox"/> Grease <input type="checkbox"/>								
	2.5 : 1	1000	300	510.7	---	SAE.140 EP								
	Gear Arrangement	Bevel couplings			Cylindrical couplings			Bearings						
	Helicoidal	Teeth number				Helicoidal	Teeth number			A	32212			
	Straight	Z 1	Z 2	Z 3	Z 4	Module	Straight	Z 1	Z 2	Z 3	Z 4	Module	B	32313
	*	16	40			7.75							C	30216
													D	30216
													E	
													F	
													G	
													H	
	Components material													
	Casing	Shaft X	Shaft Z	Bevel gear		Spur gear								
	GS 400/12 UNI 4544	18 NiCrMo5	18 NiCrMo5	Z16=18 NiCrMo5 Z40=20 CrNi4										

COMER INDUSTRIES reserves the right to make any change to this product without prior public acknowledgement

COMER INDUSTRIES S.p.A. 42046 Villanova di Reggiolo (R.E.) Italia Tel. 0522\974111 (9 Linee) Telefax 0522\973249