



Rotavator UTR

(1978 Model)

PARTS LIST

General Information

Serial No. Prefix 240N.....
 Serial number is located on gearbox mounting bracket,
 right hand side rear.

Special Notes:

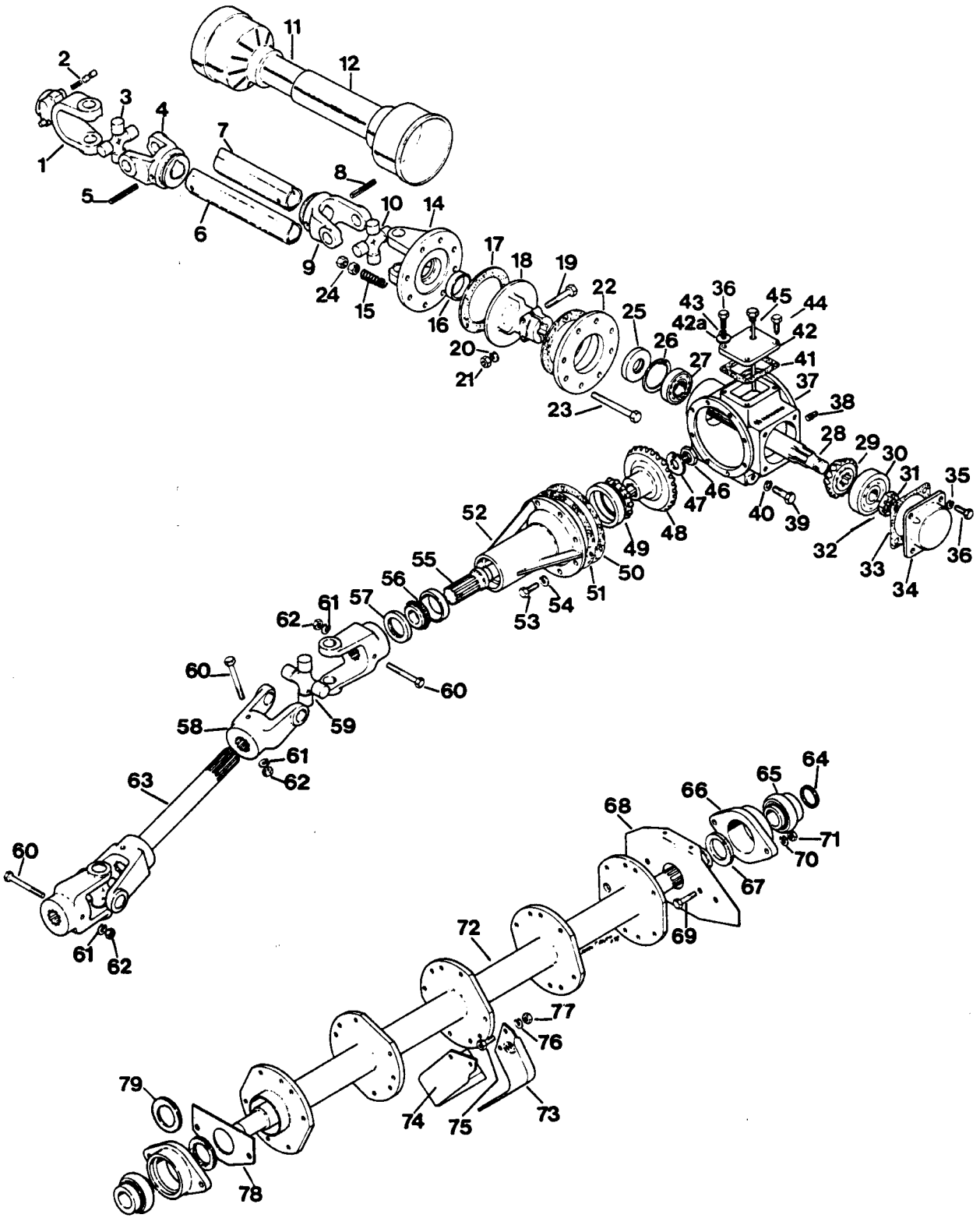
- | | | | |
|----|---------------------|----------|-------------------------|
| ◀ | Left Hand | Λ | Alternative |
| ▶ | Right Hand | * | Change since last print |
| ▲ | Upper | 306357x6 | Quantity |
| ▼ | Lower | 306357# | Quantity as required |
| ◀▶ | Width | ≡ | Only for |
| ▶▶ | Length | ≡≡ | Central |
| ↑ | From serial number | ≡≡≡ | Offset |
| ↑↑ | Up to serial number | Z | Number of teeth |
| ↻ | rpm | | |

Catalogue no.	Issue	Page Affected
77032	5/90	New Issue

Note: Some components illustrated may no longer be available. All components have been shown for identification purposes.

HOWARD

Rotavator UTR

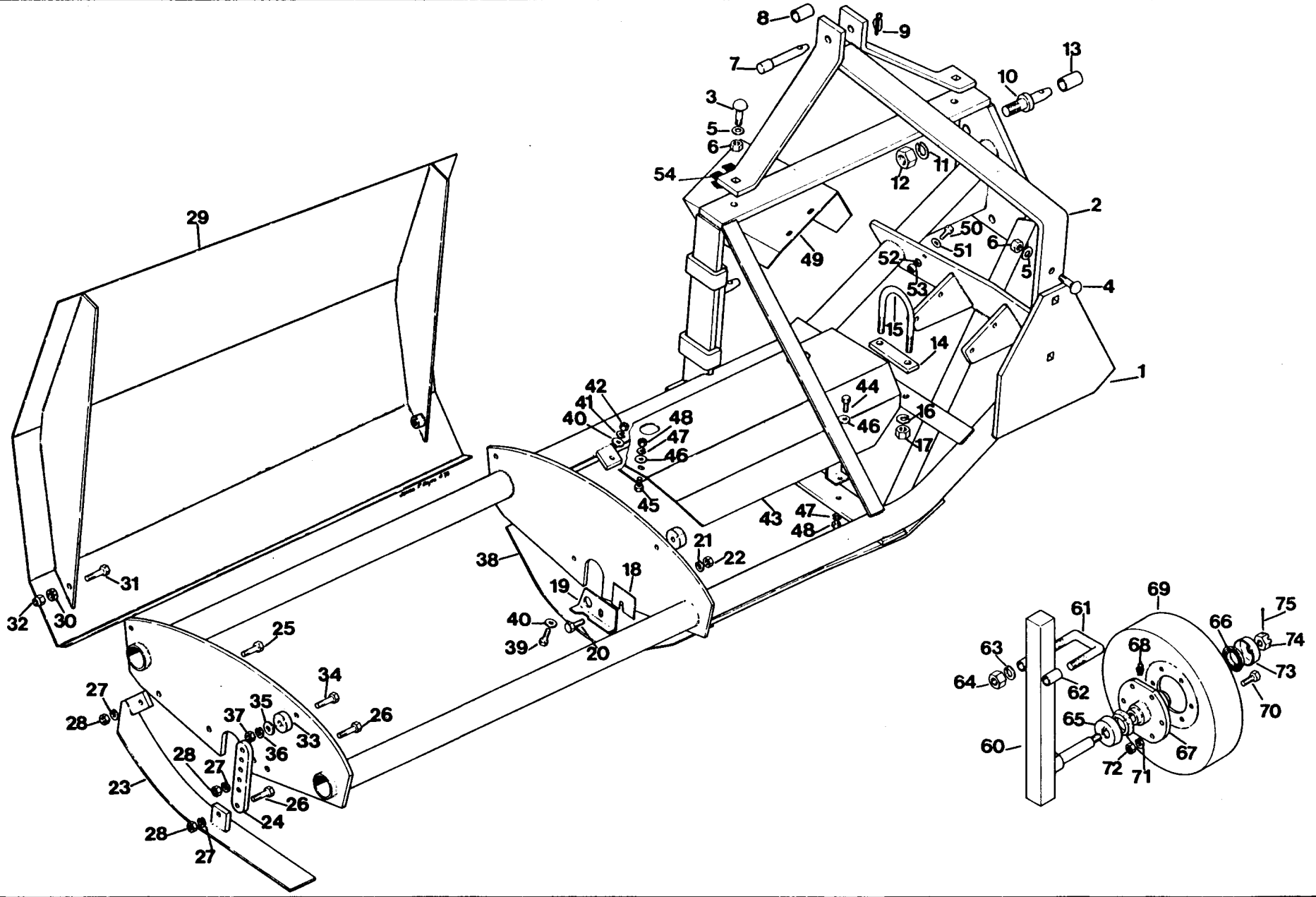


Drive and Rotor Assemblies

Top Assembly No. H41211003D Effective from serial no. 240N1001



Item	Part No.	Description	Qty.	Item	Part No.	Description	Qty.
	70240	Drive Shaft Assy (Bypy)	1	64	611813	Spacer	2
		Inner Tube Assy # 45.04.275	1	251541232		Bearing Assembly # RCJT 1½"	2
1	204051080	P.T.O. Yoke # 45.05.07	1	65		Bearing	2
2	204056290	Lock Pin Kit # 1.08.25	1	66		Housing	2
3	204056380	Universal Joint # 6.41	1	67	70155	Felt Seal	2
4	204051070	Yoke # 6.07	1	68	611810	Felt Retainer R.H.	1
5	208089240	Pin # 6.13	1	69	101108140	Bolt ½" UNF x 1½" Hex H.T.	4
6	204054070	Tube # 5.04.01.280	1	70	108081440	Spring Washer ½"	4
		Outer Tube Assy # 45.03.260	1	71	107108010	Nut ½" UNF Hex	4
7	204054040	Tube # 6.03.00.265	1	72	70137	Rotor	1
8	208089370	Pin # 6.12	1	73	T900A	Blade L.H.	8
9	204051060	Yoke # 6.06	1	74	T900	Blade R.H.	8
10	204056380	Universal Joint # 6.41	1	75	70027	Bolt - special	32
	204055020	Cover Assy # 3999/aZ	1	76	108071240	Spring Washer 7/8" UNF Hex	32
11		Inner Cover # 45.74.185	1	77	107107010	Nut 7/8" UNF Hex	32
12		Outer Cover # 45.73.185	1	78	611811	Felt Retainer L.H.	1
13			1	79	73665	Shim .015"	As Req.
	204056320	Clutch Assembly # 59630	1				
14	204056360	Clutch Plate # 61011	1				
15	204056370	Spring # 68.06	8				
16	204056200	Sleeve # 68.02.02	1				
17	204056340	Friction Disc # 38.03.01	2				
18	204056350	Clutch Disc # 61012	1				
19	301212800	Bolt M12 x 80 Hex G8.8	2				
20	308120040	Spring Washer M12	2				
21	307212010	Nut M12 Hex G8	2				
22	204056330	Pressure Plate # 61010	1				
23	301210900	Bolt M10x90 Hex G8.8	8				
24	307210010	Nut M10 Hex G8	16				
25	267235082	Oil Seal # 723508	1				
26	208001310	Circlip M72 Internal	1				
27	253572171	Bearing # 6207	1				
28	611642	Input Shaft	1				
29	611644	Pinion	1				
30	253090231	Bearing # 6406	1				
31	611613	Slotted Nut	1				
32	208010860	Split Pin M5 x 50	1				
33	328071	Gasket 0.1 mm	As Req.				
	328073	Gasket 0.5 mm	As Req.				
34	328069	End Cover	1				
35	308100040	Spring Washer M10	4				
36	301410300	Setscrew M10 x 30 Hex G8.8	6				
37	328065	Gearbox	1				
38	203031160	Drain Plug 1/8" BSP	1				
39	301212350	Bolt M12 x 35 Hex G8.8	4				
40	308120040	Spring Washer M12	4				
41	328068	Gasket	1				
42	328067	Cover	1				
42a	308100010	Flat Washer M10	2				
43	308100040	Spring Washer M10	4				
44	301410250	Setscrew M10 x 25 Hex G8.8	2				
45	328260	Dipstick	1				
46	328047	Nut	1				
47	328048	Tab Washer	1				
48	611643	Crownwheel	1				
49	255090221	Bearing # 30210	1				
50	328083	Gasket 0.5 mm	As Req.				
51	611649	Gasket 0.8 mm	As Req.				
52	611801	Housing	1				
53	301410300	Setscrew M10 x 30 Hex G8.8	8				
54	308100040	Spring Washer M10	8				
55	611805	Jackshaft	1				
56	251425071	Bearing # LM48510/48548	1				
57	266845091	Oil Seal 68 x 45 x 9	1				
	70328	Universal Assembly	2				
58	70327	Yoke	4				
59	204011650	Universal Joint	2				
60	101105280	Bolt 5/8" UNF x 3½" Hex H.T.	3				
61	108050940	Spring Washer 5/8"	3				
62	107105010	Nut 5/8" UNF Hex	3				
63	611806	Spline Shaft	1				



Frame and Shields

Top Assembly No. H41211003D Effective from serial no. 240N1001



Item	Part No.	Description	Qty.	Item	Part No.	Description	Qty.
1	611814	Main Frame	1	Steel Depth Control Kit (Optional)			
2	70023	Top Mast	1	Top Assembly No. H98114003D			
3	105610160	Bolt $\frac{5}{8}$ " BSW x 2" Cp Hd	2	60	76640	Wheel Kit	1
4	72281	Bolt $\frac{3}{8}$ " BSW x 1 $\frac{1}{4}$ " Cp Hd	2	61	76638	Wheel Arm & Axle	1
5	108101730	Shakeproof Washer $\frac{5}{8}$ " Int.	4	61	76627	U Bolt	2
6	107610010	Nut $\frac{5}{8}$ " BSW Hex	4	62	76643	Sleeve	4
7	70071	Hitch pin	1	63	308200040	Spring Washer M20	4
8	65577	Sleeve	1	64	307220010	Nut M20 Hex G8	4
9	610661	Cotter Assembly	1	65	610778	Inner Cap	1
10	79802	Hitch Pin	1	66	79810	Seal	2
11	108162540	Spring Washer 1"	1	67	79805	Hub	1
12	208057130	Nut 1" UNF Hex	1	68	202030010	Nipple $\frac{1}{8}$ " BSP x 45°	1
13	54463	Sleeve	2	69	79804	Wheel	1
14	611825	Spacer 10 mm	1	70	101308100	Setscrew $\frac{1}{2}$ " UNF x 1 $\frac{1}{4}$ " Hex H.T.	6
	611826	Spacer 3 mm	As Req.	71	108081440	Spring Washer $\frac{1}{2}$ "	6
15	610639	U Bolt	1	72	107108010	Nut $\frac{1}{2}$ " UNF Hex	6
16	108101740	Spring Washer $\frac{5}{8}$ "	2	73	79809	Outer Cap	1
17	107210010	Nut $\frac{5}{8}$ " UNC Hex	2	74	107112050	Slotted Nut $\frac{3}{4}$ " UNF	1
18	611812	Shim	As Req.	75	208016390	Split Pin M4.0 x 32	1
19	70112	Weedcutter R.H.	1				
	70111	Weedcutter L.H.	1				
20	101308100	Setscrew $\frac{1}{2}$ " UNF x 1 $\frac{1}{4}$ " Hex H.T.	1				
21	108081440	Spring Washer $\frac{1}{2}$ "	1				
22	107108010	Nut $\frac{1}{2}$ " UNF Hex	1				
23	70068	Depth Skid	1				
24	70070	Adjusting Bar	1				
25	101108120	Bolt $\frac{1}{2}$ " UNF x 1 $\frac{1}{2}$ " Hex H.T.	1				
26	101108140	Bolt $\frac{1}{2}$ " UNF x 1 $\frac{3}{4}$ " Hex H.T.	2				
27	108081440	Spring Washer $\frac{1}{2}$ "	3				
28	107108010	Nut $\frac{1}{2}$ " UNF Hex	3				
29	611820	Shield	1				
N.I.	70604	Transfer	1				
N.I.	70630	Transfer	1				
N.I.	70656	Transfer	1				
30	107108010	Nut $\frac{1}{2}$ " UNF Hex.	2				
31	101108160	Bolt $\frac{1}{2}$ " UNF x 2" Hex. H.T.	2				
32	107108010	Nut $\frac{1}{2}$ " UNF Hex.	2				
33	74582	Rubber Mount	2				
34	101108140	Bolt $\frac{1}{2}$ " UNF x 1 $\frac{3}{4}$ " Hex H.T.	2				
35	209025490	Flat Washer $\frac{1}{2}$ "	2				
36	108081440	Spring Washer $\frac{1}{2}$ "	2				
37	208057210	Locknut $\frac{1}{2}$ " UNF Hex	2				
38	70034	Bearing Shield	1				
39	101106100	Bolt $\frac{3}{8}$ " UNF x 1 $\frac{1}{4}$ " Hex H.T.	3				
40	209025670	Flat Washer $\frac{3}{8}$ "	6				
41	108061140	Spring Washer $\frac{3}{8}$ "	3				
42	107106010	Nut $\frac{3}{8}$ " UNF Hex	3				
43	611807	Guard	1				
44	101106100	Bolt $\frac{3}{8}$ " UNF x 1 $\frac{1}{4}$ " Hex H.T.	2				
45	101306060	Setscrew $\frac{3}{8}$ " UNF x $\frac{3}{4}$ " Hex H.T.	2				
46	108061210	Flat Washer $\frac{3}{8}$ "	4				
47	108061140	Spring Washer $\frac{3}{8}$ "	4				
48	107106010	Nut $\frac{3}{8}$ " UNF Hex	4				
49	611800	Clutch Cover	1				
50	101306080	Setscrew $\frac{3}{8}$ " UNF x 1" Hex H.T.	1				
51	108061210	Flat Washer $\frac{3}{8}$ "	1				
52	108061140	Spring Washer $\frac{3}{8}$ "	1				
53	107106010	Nut $\frac{3}{8}$ " UNF Hex	1				
54	70670	Transfer	1				