



FM

Finishing Mower



HOWARD AUSTRALIA PTY LTD

Private Bag 5
SEVEN HILLS NSW 1730
AUSTRALIA

Telephone:
Fax:

(02) 9674 2966
(02) 9674 6263

TABLE NO.910.021

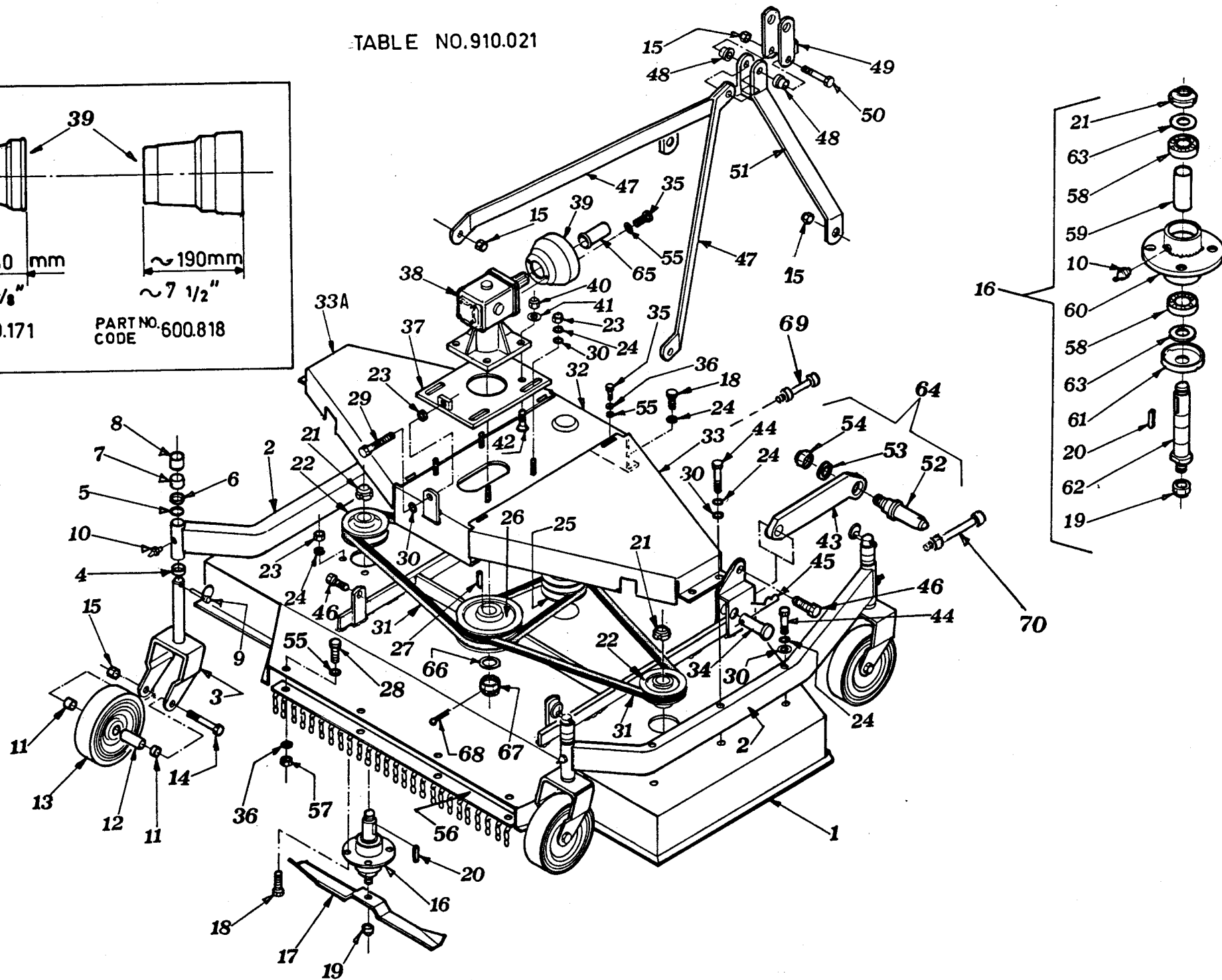
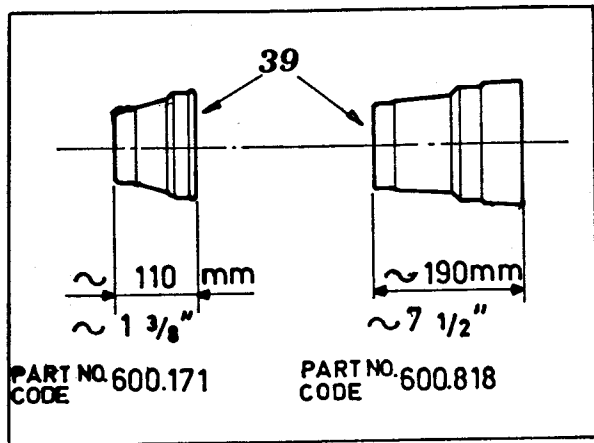


TABLE NO 910.021

ITEM	DESCRIPTION	SM/120P		SM/150P		SM/180P		ITEM	DESCRIPTION	SM/120P		SM/150P		SM/180P	
		Qty	PART NO	Qty	PART NO	Qty	PART NO			Qty	PART NO	Qty	PART NO	Qty	PART NO
1	COMPLETE HOOD	1	100.211	1	100.212	1	100.213	36	WASHER	8	600.100	9	600.100	10	600.100
2	WHEEL AXLE	2	100.207	2	100.208	2	100.209	37	MULT.GEAR SKID HOLD.	1	100.022	1	100.021	1	100.021
3	WHEEL SUPPORT	4	100.020	4	100.020	4	100.020	38	COMPLETE MULTIP.	1	100.273	1	100.273	1	100.273
4	DIST.WASHER 12mm 1/2"	4	100.044	4	100.044	4	100.044	39	CAP L.190	1	600.818	1	600.818	1	600.818
5	DIST.WASHER 2mm 1/16"	4	100.042	4	100.042	4	100.042	39	CAP L.110	1	600.171	1	600.171	1	600.171
6	DIST.WASHER 6mm 1/4"	4	100.043	4	100.043	4	100.043	40	NUT	4	600.075	4	600.075	4	600.075
7	DIST.WASHER 25mm 1"	4	100.045	4	100.045	4	100.045	41	WASHER	4	600.104	4	600.104	4	600.104
8	DIST.WASHER 32mm 1"1/4	4	100.046	4	100.046	4	100.046	42	SCREW	4	600.158	4	600.158	4	600.158
9	SPRING PIN	4	600.116	4	600.116	4	600.116	43	SUPPORT	2	100.039	2	100.039	2	100.039
10	GREASE NIPPLE	7	600.124	7	600.124	7	600.124	44	SCREW	6	600.162	6	600.162	6	600.162
11	SPACER	8	100.006	8	100.006	8	100.006	45	PIN	2	600.019	2	600.019	2	600.019
12	BUSHING	4	100.008	4	100.008	4	100.008	46	SCREW	4	600.616	4	600.616	4	600.616
13	WHEEL	4	600.165	4	600.165	4	600.165	47	TIE ROD	2	100.116	2	100.117	2	100.118
14	SCREW	4	600.156	4	600.156	4	600.156	48	SPACER	2	100.062	2	100.062	2	100.062
15	NUT	9	600.077	9	600.077	9	600.077	49	HITCH	1	100.115	1	100.115	1	100.115
16	COMPLETE HUB	3	100.047	3	100.047	3	100.047	50	SCREW	1	600.152	1	600.152	1	600.152
17	BLADE	3	100.064	3	100.065	3	100.066	51	THREE POINT HITCH	1	100.119	1	100.120	1	100.120
18	SCREW	18	600.006	18	600.006	18	600.006	52	PIN	2	105.091	2	105.091	2	105.091
19	NUT	3	600.746	3	600.746	3	600.746	53	WASHER	2	600.214	2	600.214	2	600.214
20	LATCH	3	600.123	3	600.123	3	600.123	54	NUT	2	600.249	2	600.249	2	600.249
21	SELF LOCK.RING NUT	3	600.122	3	600.122	3	600.122	55	WASHER	10	600.115	11	600.115	12	600.115
22	PULLEY	2	100.060	2	100.058	2	100.058	56	PROTECTION	1	100.032	1	100.031	1	100.030
23	NUT	17	600.010	17	600.010	17	600.010	57	NUT	4	600.037	5	600.037	6	600.037
24	WASHER	28	600.102	28	600.102	28	600.102	58	BEARING	6	600.117	6	600.117	6	600.117
25	DOUBLE PULLEY	1	100.059	1	100.057	1	100.057	59	SPACER	3	100.048	3	100.048	3	100.048
26	DOUBLE PULLEY	1	100.056	1	100.054	1	100.055	60	HUB BODY	3	100.049	3	100.049	3	100.049
27	LATCH	1	600.181	1	600.181	1	600.181	61	BEARING COVER	3	100.052	3	100.052	3	100.052
28	SCREW	3	600.223	3	600.223	3	600.223	62	PIN	3	100.051	3	100.051	3	100.051
29	SCREW	1	600.160	1	600.160	1	600.160	63	WASHER	6	100.050	6	100.050	6	100.050
30	WASHER	11	600.322	11	600.322	11	600.322	64	PIN	2	100.010	2	100.010	2	100.010
31	V BELT	2	600.141	2	600.139	2	600.140	65	PROTECTION	1	600.172	1	600.172	1	600.172
32	MULTIPLIER SUPPORT	1	100.124	1	100.131	1	100.131	66	WASHER	1	600.335	1	600.335	1	600.335
33	BELT COVER, R.H.	1	100.558	1	100.561	1	100.572	67	NUT	1	600.296	1	600.296	1	600.296
33A	BELT COVER, L.H.	1	100.559	1	100.562	1	100.573	68	SPLIT PIN	1	600.347	1	600.347	1	600.347
34	PIN	2	100.040	2	100.040	2	100.040	69	GREASE FITTING	1	100.577	1	100.577	1	100.577
35	SCREW	6	600.061	6	600.061	6	600.061	70	GREASE FITTING	2	100.125	2	100.125	2	100.125

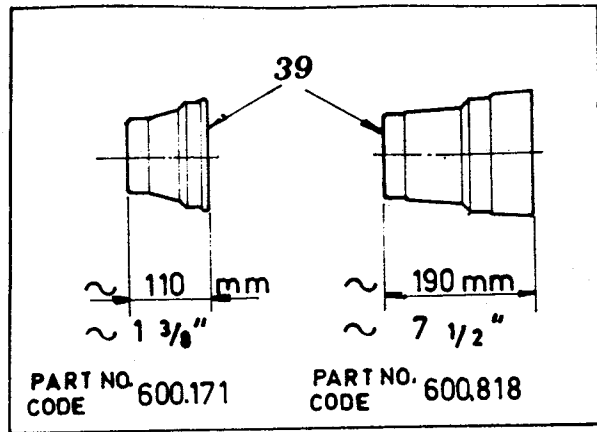


TABLE NO. 910.020

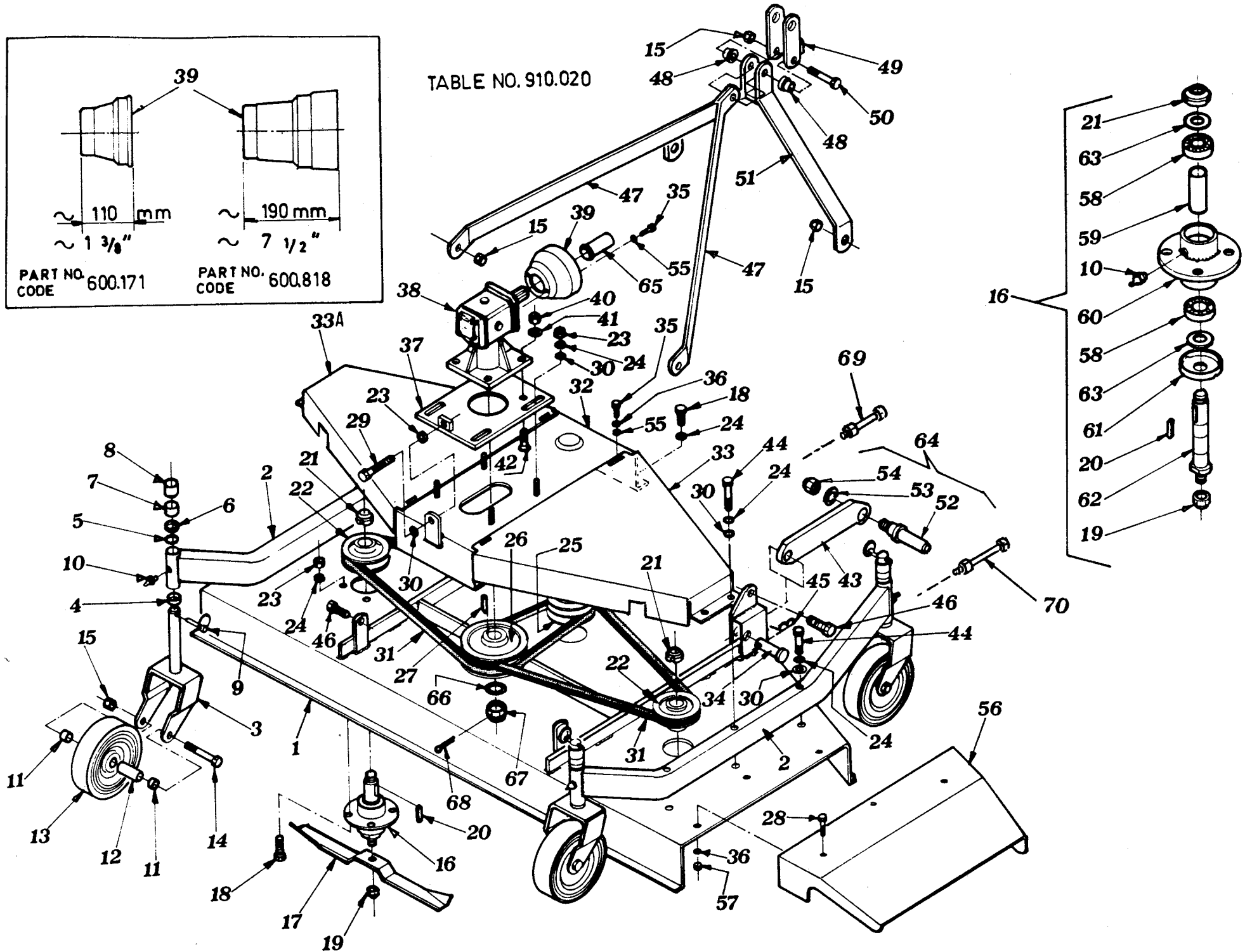
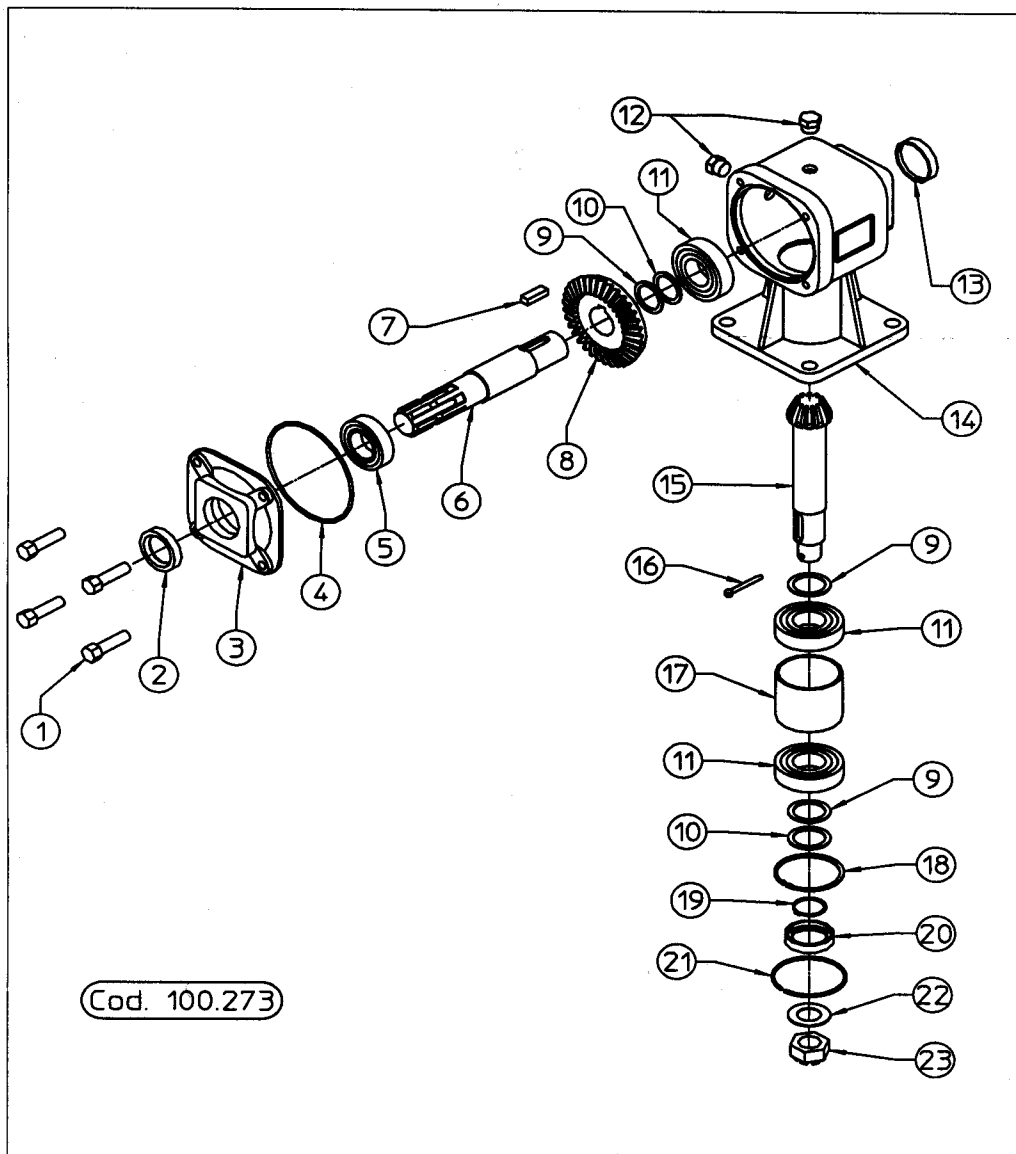


TABLE NO.910.020

ITEM	DESCRIPTION	SM/120 L		SM/150 L		SM/180 L		ITEM	DESCRIPTION	SM/120 L		SM/150 L		SM/180 L	
		Qty	PART NO	Qty	PART NO	Qty	PART NO			Qty	PART NO	Qty	PART NO	Qty	PART NO
1	COMPLETE HOOD	1	100.121	1	100.122	1	100.123	36	WASHER	7	600.100	7	600.100	7	600.100
2	WHEEL AXLE	2	100.207	2	100.208	2	100.209	37	MULT.GEAR SKID HOL.	1	100.022	1	100.021	1	100.021
3	WHEEL SUPPORT	4	100.020	4	100.020	4	100.020	38	COMPLETE MULTIPL.	1	100.273	1	100.273	1	100.273
4	DIST.WASHER 12mm 1/2"	4	100.044	4	100.044	4	100.044	39	CAP L.190	1	600.818	1	600.818	1	600.818
5	DIST.WASHER 2mm 1/16"	4	100.042	4	100.042	4	100.042	39	CAP L.110	1	600.171	1	600.171	1	600.171
6	DIST.WASHER 6mm 1/4"	4	100.043	4	100.043	4	100.043	40	NUT	4	600.075	4	600.075	4	600.075
7	DIST.WASHER 25mm 1"	4	100.045	4	100.045	4	100.045	41	WASHER	4	600.104	4	600.104	4	600.104
8	DIST.WASHER 32mm 1"1/4	4	100.046	4	100.046	4	100.046	42	SCREW	4	600.158	4	600.158	4	600.158
9	SPRING PIN	4	600.116	4	600.116	4	600.116	43	SUPPORT	2	100.039	2	100.039	2	100.039
10	GREASE NIPPLE	7	600.124	7	600.124	7	600.124	44	SCREW	6	600.162	6	600.162	6	600.162
11	SPACER	8	100.006	8	100.006	8	100.006	45	PIN	2	600.019	2	600.019	2	600.019
12	BUSHING	4	100.008	4	100.008	4	100.008	46	SCREW	4	600.616	4	600.616	4	600.616
13	WHEEL	4	600.165	4	600.165	4	600.165	47	TIE ROD	2	100.116	2	100.117	2	100.118
14	SCREW	4	600.156	4	600.156	4	600.156	48	SPACER	2	100.062	2	100.062	2	100.062
15	NUT	9	600.077	9	600.077	9	600.077	49	HITCH	1	100.115	1	100.115	1	100.115
16	COMPLETE HUB	3	100.047	3	100.047	3	100.047	50	SCREW	1	600.152	1	600.152	1	600.152
17	BLADE	3	100.064	3	100.065	3	100.066	51	THREE POINT HITCH	1	100.119	1	100.120	1	100.120
18	SCREW	18	600.006	18	600.006	18	600.006	52	PIN	2	105.091	2	105.091	2	105.091
19	NUT	3	600.746	3	600.746	3	600.746	53	WASHER	2	600.214	2	600.214	2	600.214
20	LATCH	3	600.123	3	600.123	3	600.123	54	NUT	2	600.249	2	600.249	2	600.249
21	SELF LOCK.RING NUT	3	600.122	3	600.122	3	600.122	55	WASHER	8	600.115	8	600.115	8	600.115
22	PULLEY	2	100.060	2	100.058	2	100.058	56	LATERAL CONVEYOR	1	100.029	1	100.028	1	100.027
23	NUT	17	600.010	17	600.010	17	600.010	57	NUT	3	600.037	3	600.037	3	600.037
24	WASHER	28	600.102	28	600.102	28	600.102	58	BEARING	6	600.117	6	600.117	6	600.117
25	DOUBLE PULLEY	1	100.059	1	100.057	1	100.057	59	SPACER	3	100.048	3	100.048	3	100.048
26	DOUBLE PULLEY	1	100.056	1	100.054	1	100.055	60	HUB BODY	3	100.049	3	100.049	3	100.049
27	LATCH	1	600.181	1	600.181	1	600.181	61	BEARING COVER	3	100.052	3	100.052	3	100.052
28	SCREW	3	600.223	3	600.223	3	600.223	62	PIN	3	100.051	3	100.051	3	100.051
29	SCREW	1	600.160	1	600.160	1	600.160	63	WASHER	6	100.050	6	100.050	6	100.050
30	WASHER	11	600.322	11	600.322	11	600.322	64	PIN	2	100.010	2	100.010	2	100.010
31	V BELT	2	600.141	2	600.139	2	600.140	65	PROTECTION	1	600.172	1	600.172	1	600.172
32	MULTIPLIER SUPPORT	1	100.124	1	100.131	1	100.131	66	WASHER	1	600.335	1	600.335	1	600.335
33	BELT COVER, R.H.	1	100.558	1	100.561	1	100.572	67	NUT	1	600.296	1	600.296	1	600.296
33A	BELT COVER, L.H.	1	100.559	1	100.562	1	100.573	68	SPLIT PIN	1	600.347	1	600.347	1	600.347
34	PIN	2	100.040	2	100.040	2	100.040	69	GREASE FITTING	1	100.577	1	100.577	1	100.577
35	SCREW	6	600.061	6	600.061	6	600.061	70	GREASE FITTING	2	100.125	2	100.125	2	100.125



MULTIPLICATORE/MULTIPLIER/MULTIPLICATER R.P.M.540 ANTIORARIO CODE 100.273					
ITEM	DESCRIZIONE	DESCRIPTION	DESCRIPTION	Q.TY	CODE
1	VITE	SCREW	VIS	4	600.054
2	ANELLO	RING	SEGMENT	1	600.346
3	COPERCHIO	COVER	BOUCHON	1	100.272
4	GUARNIZIONE OR	OR GASKET	JOINT	1	600.345
5	CUSCINETTO	BEARING	PALIER	1	600.342
6	ALBERO INGRESSO	P.TO SHAFT	ARBRE	1	100.268
7	LINGUETTA	LATCH	CLAVETTE	1	600.325
8	CORONA CONICA	RING BEVEL GEAR	COURONNE CONIQUE	1	100.269
9	SPESSORE	SHIM	EPAISSEUR	3	200.274
10	SPESSORE	SHIM	EPAISSEUR	2	200.490
11	CUSCINETTO	BEARING	PALIER	3	600.327
12	TAPPO	PLUG	BOUCHON	2	600.341
13	CAPPELOTTO	CAP	CAPSULE	1	600.328
14	SCATOLA	GEARBOX	BOITE	2	100.267
15	ALBERO CON PIGNONE	PINION	PIGNON	1	100.271
16	COPIGLIA	SPLIT PIN	GOUPILLE	1	600.347
17	DISTANZIALE	SPACER	ENTRETOISE	1	100.270
18	ANELLO ARRESTO	SNAP RING	SEGMENT ARRET	1	600.332
19	ANELLO ARRESTO	SNAP RING	SEGMENT ARRET	1	600.333
20	ANELLO	RING	SEGMENT	1	600.338
21	ANELLO	RING	SEGMENT	1	600.337
22	ROSETTA	WASHER	RONDELLE	1	600.335
23	DADO	NUT	ECROU	1	600.296

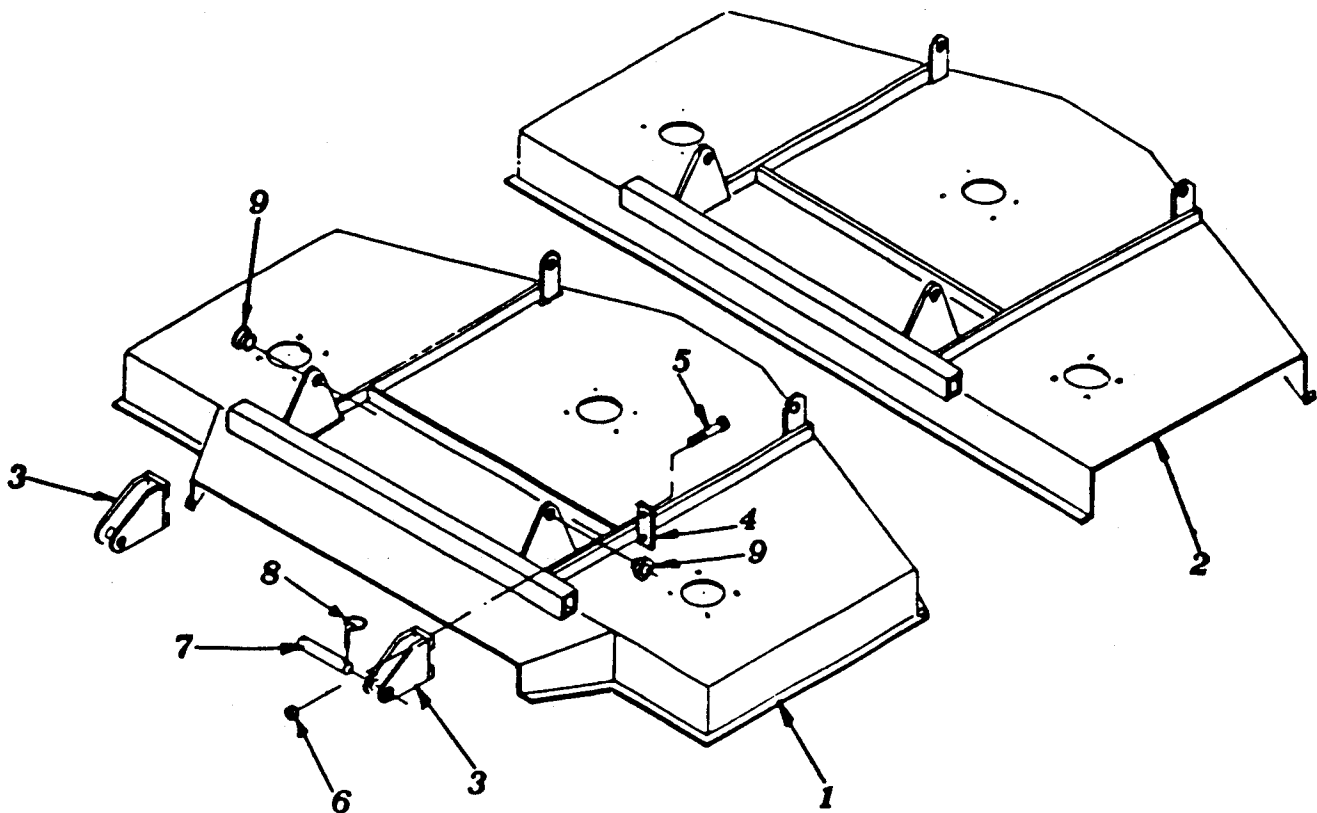


TABLE NO.910.040

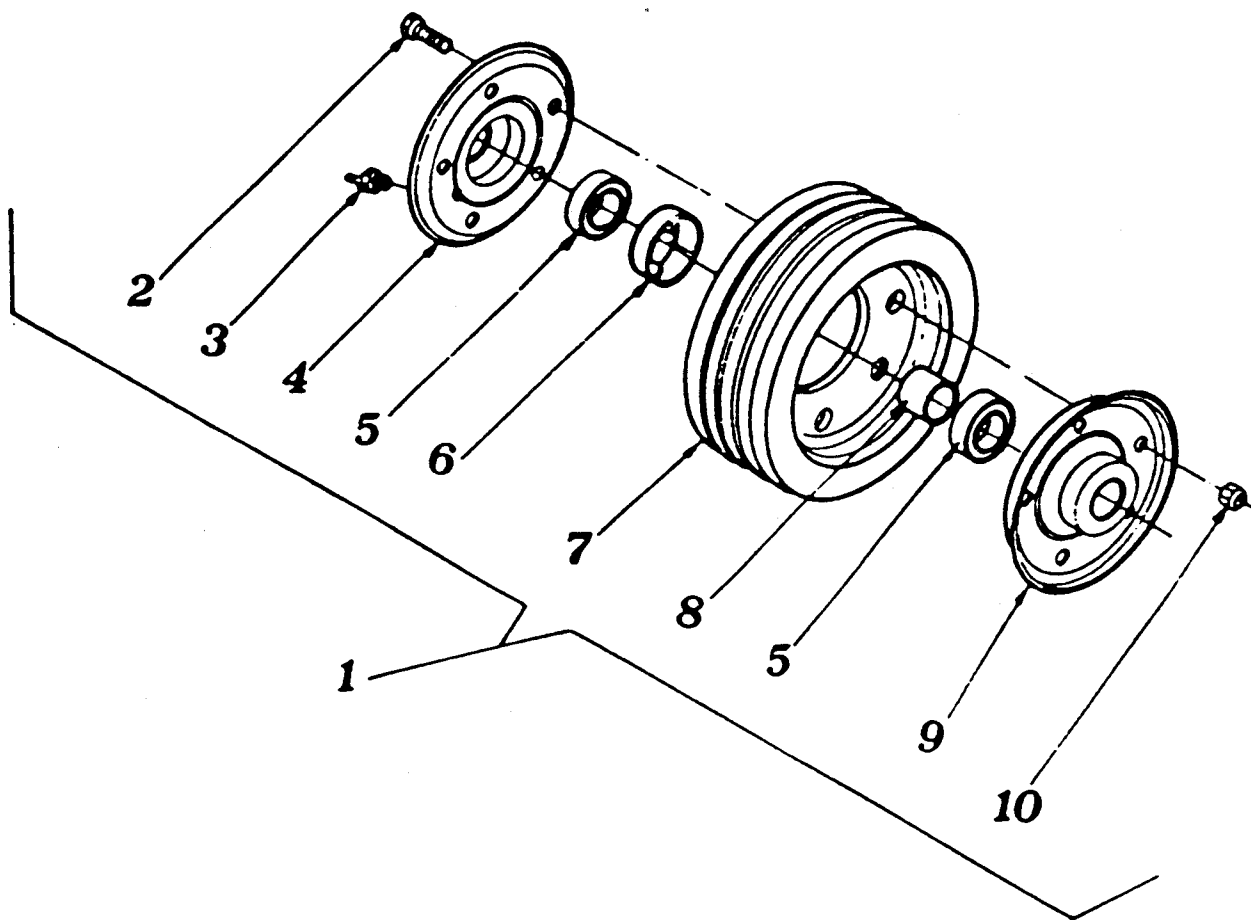
POS	DESCRIZIONE	DESCRIPTION	DESCRIPTION	QTY	CODE	NOTE
1	COFANO COMPL.	COMPLETE HOO	COFFRE COMPLET	1	100.081	120/P
1	COFANO COMPL.	COMPLETE HOO	COFFRE COMPLET	1	100.082	150/P
1	COFANO COMPL.	COMPLETE HOO	COFFRE COMPLET	1	100.083	180/P
1	COFANO COMPL.	COMPLETE HOO	COFFRE COMPLET	1	100.323	230/P
2	COFANO COMPL.	COMPLETE HOO	COFFRE COMPLET	1	100.084	120/L
2	COFANO COMPL.	COMPLETE HOO	COFFRE COMPLET	1	100.085	150/L
2	COFANO COMPL.	COMPLETE HOO	COFFRE COMPLET	1	100.086	180/L
3	ATTACCO	HITCH	ATTELAGE	2	100.079	120/150/180
3	ATTACCO	HITCH	ATTELAGE	2	100.317	230/P
4	CONTROPIASTR	COUNTER PLATE	CONTRE-PLATE	2	100.080	120/150/180
4	CONTROPIASTR	COUNTER PLATE	CONTRE-PLATE	2	100.330	230/P
5	VITE	SCREW	VIS	4	600.210	120/150/180
5	VITE	SCREW	VIS	4	600.390	230/P
6	DADO	NUT	ECROU	4	600.077	
7	PERNO	PIN	PIVOT	2	100.102	
8	SPINA	PIN	GOUPILLE	4	600.017	
9	BOCCOLA	BUSH	HAPPE	2	105.113	

NOTE:ITEMS FOR THE FRONT MOUNT MOWER

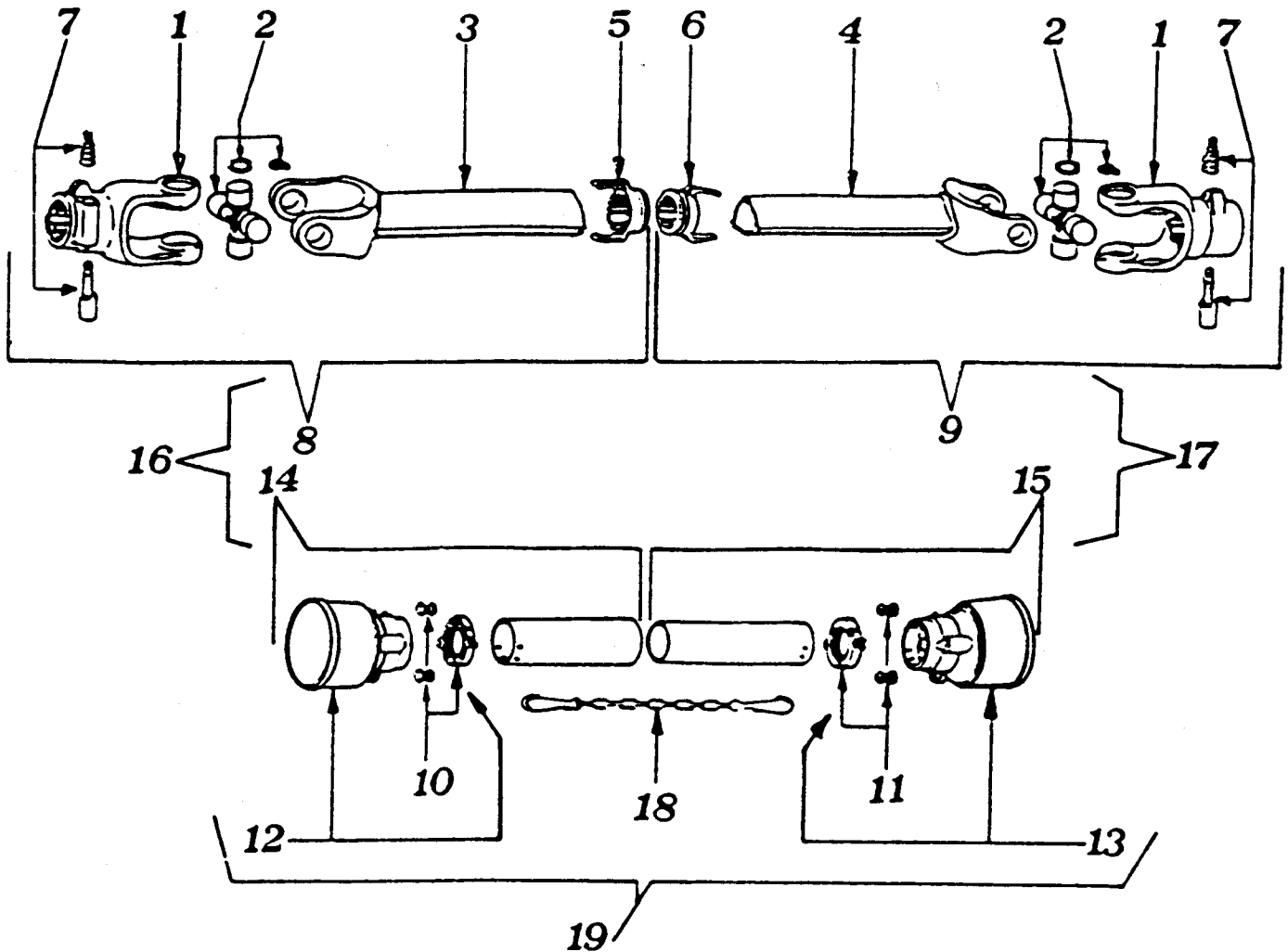
PIECE POUR LA VERSION FRONTALE

FOR THE OTHER ITEMS SEE TABLES NOS.910.002/910.020/910.021

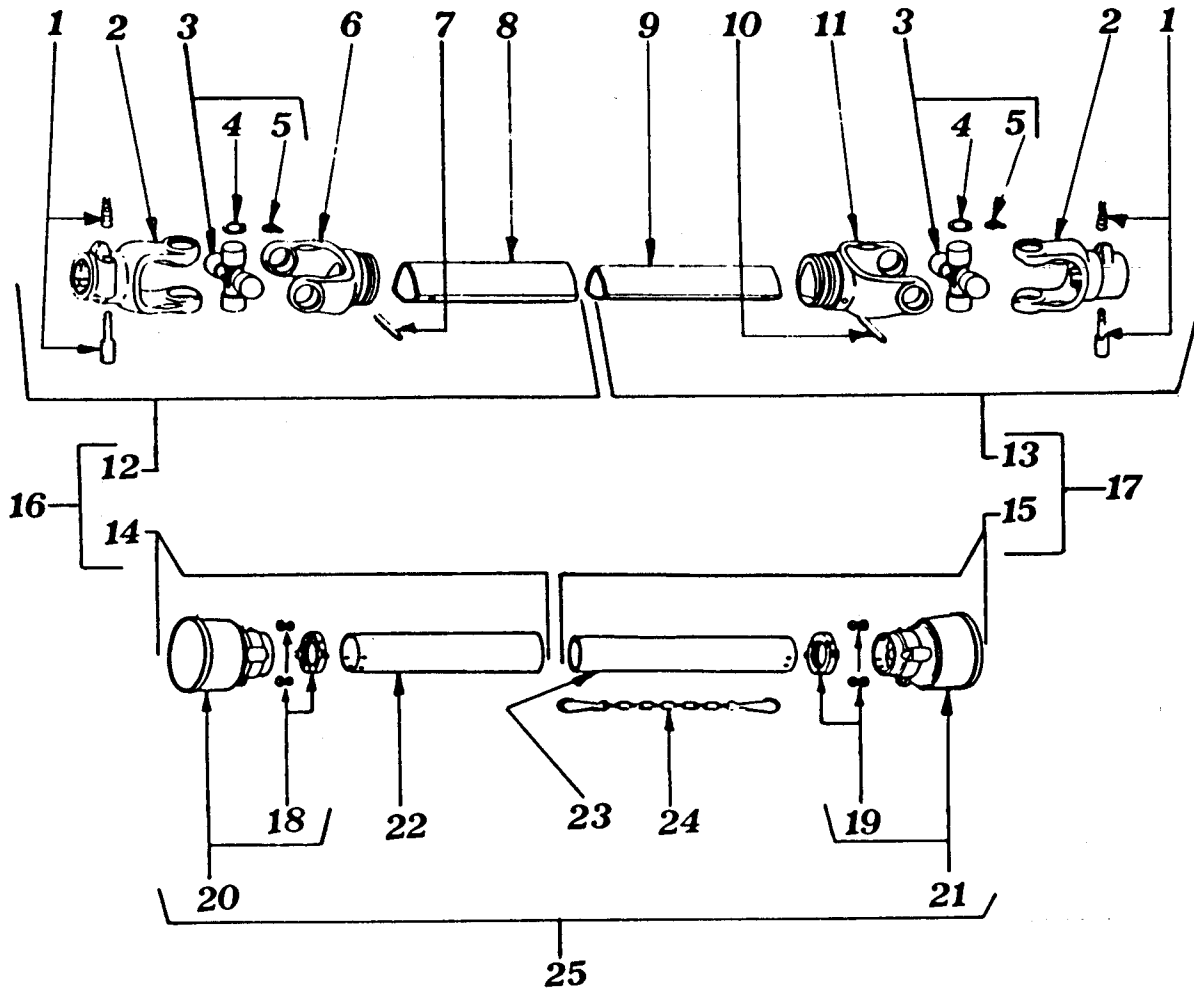
POUR LES AUTRES PIECES VOIR TABLES 910.002/910.020/910.021



RUOTA COMPLETA/COMPLET WHEEL/ROUE COMPLETE 600.165					
POS	DESCRIZIONE	DESCRIPTION	DESCRIPTION	QTY	CODE
1	RUOTA COMPLETA	COMPLET WHEEL	ROUE COMPLETE	1	600.165
2	VITE	SCREW	VIS	5	600.766
3	INGRASSATORE	GREASE NIPPLE	GRAISSEUR	1	600.124
4	SEMICERCHIO	HALF RIM	DEMI-CIRCLE	1	600.764
5	CUSCINETTO	BEARING	PALIER	2	600.117
6	BOCCOLA	BUSH	HAPPE	1	100.129
7	RUOTA	WHEEL	ROUE	1	600.763
8	DISTANZIALE	SPACER	ENTRETOISE	1	100.128
9	SEMICERCHIO	HALF RIM	DEMI-CIRCLE	1	600.765
10	DADO	NUT	ECROU	5	600.046



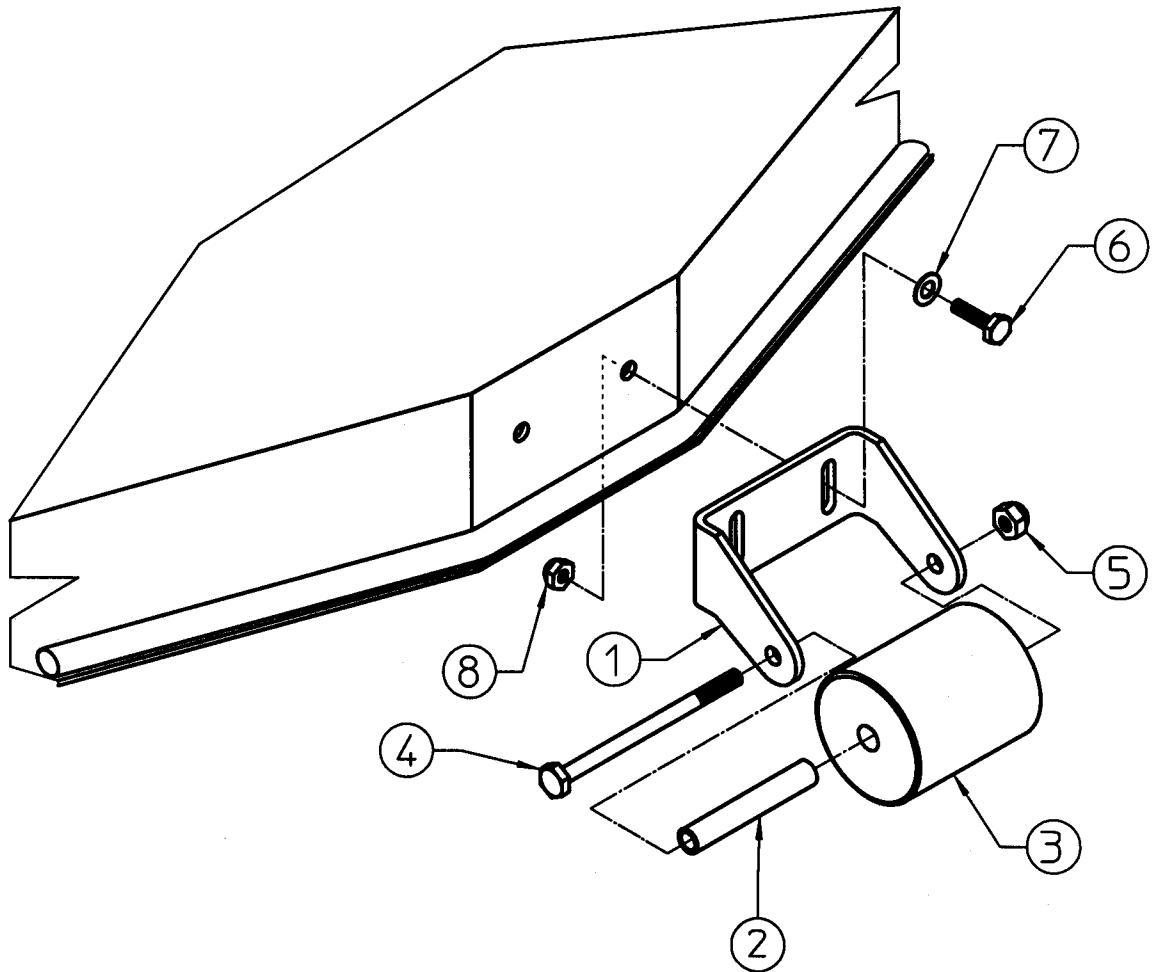
CARDAN SHAFT/ARBRE A CARDAN 600.120					
ITEM	PART NO	Q.ty	DESCRIPTION	DESCRIPTION	NOTE
1	610.051	2	YOKE	FOURCHE	
2	610.052	2	CROSS JOURNAL ASS.	CROISILLION COMPLET	
3	610.053	1	YOKE WITH OUTER TUBE	FOURCHE AVEC TUYAU EXT.	
4	610.054	1	YOKE WITH INNER TUBE	FOURCHE AVEC TUYAU INT.	
5	610.055	1	RING FOR OUTER TUBE	BAGUE EXT.	
6	610.056	1	RING FOR INNER TUBE	BAGUE INT.	
7	610.057	2	COMPLETE PUSH BUTTON	POUSSOIR COMPLET	
8	610.058	1	HALF SHAFT-WITHOUT GUARD	MOITIE ARBRE EXT.SANS PROT.	
9	610.059	1	HALF SHAFT-WITHOUT GUARD	MOITIE ARBRE INT.SANS PROT.	
10	610.060	1	OUTER BEARING	FRETTE EXT.	
11	610.061	1	INNER BEARING	FRETTE INT.	
12	610.062	1	OUTER BASIC CONE	COIFFE COMPLETE EXT.	
13	610.063	1	INNER BASIC CONE	COIFFE COMPLETE INT.	
14	610.064	1	OUTER HALF GUARD	MOITIE PROTECTION EXT.	
15	610.065	1	INNER HALF GUARD	MOITIE PROTECTION INT.	
16	610.066	1	OUTER HALF SHAFT-WITH GUARD	MOITIE ARBRE EXT.AVEC PROT.	
17	610.067	1	INNER HALF SHAFT- WITH GUARD	MOITIE ARBRE INT. AVEC PROT.	
18	610.068	1	CHAIN	CHAINE	
19	610.069	1	COMPLETE GUARD	PROTECTION	



CARDAN SHAFT/ARBRE A CARDAN 600.859

ITEM	PART NO	Q.ty	DESCRIPTION	DESCRIPTION	NOTE
1	610.057	2	COMPLETE PUSH BUTTON	POUSSOIR COMPLET	
2	610.051	2	YOKE	FOURCHE	
3	610.052	2	CROSS JOURNAL ASS.	CROISSILLION COMPLET	
4	610.248	8	CIRCLIP	BAGUE	
5	610.206	2	GREASE NIPPLE	GRAISSEUR	
6	610.249	1	OUTER TUBE YOKE	FOURCHE TUYAU EXT.	
7	610.211	1	FLEXIBLE PIN	GOUILLE	
8	610.210	1	CM. CARDAN TUBE	TUYAU CARDAN	
9	610.123	1	CM. CARDAN TUBE	TUYAU CARDAN	
10	600.027	1	FLEXIBLE PIN	GOUILLE	
11	610.250	1	INNER TUBE YOKE	FOURCHE TUYAU INTERIEUR	
12	610.404	1	HALF SHAFT (WITHOUT GUARD)	MOITIE ARBRE EXT.SANS PROT.	
13	610.405	1	HALF SHAFT (WITHOUT GUARD)	MOITIE ARBRE INT.SANS PROT.	
14	610.406	1	HALF SAFETY GUARD	MOITIE PROTECTION EXT.	
15	610.407	1	HALF SAFETY GUARD	MOITIE PROTECTION INT.	
16	610.408	1	HALF SHAFT (WITH GUARD)	MOITIE ARBRE EXT.AVEC PROT.	
17	610.409	1	HALF SHAFT (WITH GUARD)	MOITIE ARBRE INT.AVEC PROT.	
18	610.398	1	O. BEARING	FRETTE	
19	610.399	1	I. BEARING	FRETTE	
20	610.400	1	O. BASIC CONE	COIFFE COMPLETE EXT.	
21	610.401	1	I. BASIC CONE	COIFFE COMPLETE INT.	
22	610.402	1	CM. SAFETY TUBE	TUYAU PROTECTION EXT.	
23	610.403	1	CM. SAFETY TUBE	TUYAU PROTECTION INT.	
24	610.068	2	CHAIN	CHAINE	
25	610.410	1	SAFETY GUARD	PROTECTION	

*OPTIONAL



*	1	100.503	ANTI SCALPING KIT, COMPLETE	GROUPE ROULEAU FRONTALE	SM/230
*	1	100.364	ANTI SCALPING KIT, COMPLETE	GROUPE ROULEAU FRONTALE	SM/120-150-180
8	2	600.029	NUT M10 DIN 980 KL 8 ZN	ECROU M10 DIN 980 KL 8 ZN	SM/120-150-180
7	2	600.322	WASHER D.10.5 UNI 6592 ZN	RONDELLE D.10.5 UNI 6592 ZN	
6	2	600.006	SREW M10 x 25 UNI 5739 8.8	VIS M10 x 25 UNI 5739 8.8	
5	1	600.077	NUT M12 DIN 980 KL 8	ECROU M12 DIN 980 KL 8	
4	1	610.676	SCREW M12 x 220 UNI 5737	VIS M12 x 220 UNI 5737	SM/230
4	1	600.807	SCREW M12 x 160 UNI 5737	VIS M12 x 160 UNI 5737	SM/120-150-180
3	1	100.505	ROLLER	ROULEAU	SM/230
3	1	100.260	ROLLER	ROULEAU	SM/120-150-180
2	1	100.504	SPACER	ENTRETOISE	SM/230
2	1	100.259	SPACER	ENTRETOISE	SM/120-150-180
1	1	100.263	SUPPORT	SUPPORT	SM/230
1	1	100.258	SUPPORT	SUPPORT	SM/120-150-180
ITEM	Q. ty	PART NO.	DESCRIPTION	DESCRIPTION	NOTE